



# **IMANUWALI YE-PAIA NE-POPIA**

## **UHLOBO LWESI-3**

**YENZIWE NGOKWE-SAHLUKO SE-14 SOMTHETHO WOKUKHUTHAZA UKUFINYELELEKA KOLWAZI WONYAKA WE-2000 (UMTHETHO WESI-2 WONYAKA WE-2000) UKUZE KUHLANGATSHEZWE IZINDINGO ZOMTHETHO WOKUVIKELWA KOLWAZI LOBUQU WONYAKA WE-2013 (I-POPIA)**

Umbhalo	Uhlobo	Inombolo Yefeksi	Isigaba Sokuphepha	UMnyango	Inombolo ye-Tanzwana	Usuku ekhishwe ngalo	
IMANUWALI YE-PAIA NE-POPIA	3	7/3/4/2/1	Unclassified	I-IRM	NERSA-1532172523-68514	2022/23	Page 1 of 49

	Uchibiyelwe Ngu-	Wabukezwa Ngu-	Wanconywa Ngu-	Wamukelwe Ngu-
<b>Igama</b>	Nks P Nkosi	Nks T Jamba	Nks F Harrison	Ummeli Nomalanga Sithole
<b>Isikhundla ngokomsebenzi</b>	Umphathi Wolwazi	I-HOD:IRM	Ibamba loMphathi Omkhulu	Isikhulu Esingumphathi Omkhulu
<b>IGatsha /uMnyango / iYuniti</b>	Ukuphathwa Kwemithombo Yolwazi	Ukuphathwa Kwemithombo Yolwazi	Izinsizakalo Zangaphakathi Enhlanganweni	IHhovisi lika-CEO
<b>Isiginesha</b>	<i>PNkosi</i>	<i>TJamba</i>	<i>Fiona Harrison</i>	Pp <i>Lufuno Nematswerani</i>
<b>Usuku</b>	30 Meyi 2023	31 Meyi 2023	02 Juni 2023	05/06/2023

Izinqubomgomo Nezinkambiso Ezihlobene				
<u>Inqubomgomo Yokuphathwa Kwamarekhodi</u>				
<u>Isheduli Yokugcinwa kanye Negunya Lokulahlala Lokuphathwa Kwamarekhodi</u>				
<u>Inqubomgomo Yezokuphepha ye-NERSA</u>				
<u>Inqubomgomo ye-ICT Yokuvikelwa Kwemininingo</u>				
<u>Inqubomgomo Yokuphathwa Kwe-akhwunti Yomsebenzisi</u>				
<u>Inqubomgomo Yokusetshenziswa Ngumsebenzisi</u>				
<u>Inqubomgomo Yezilimi ye-NERSA</u>				
Imethrikhi ye-RACI				
	Obheke okwenziwayo	Obikayo	Okuxhunyanwe naye	Owazisiwe
<b>U-CEO</b>		<b>X</b>		
<b>U-EM: COS</b>	<b>X</b>			
<b>U-SNR: RSU</b>	<b>X</b>			
<b>U-HOD: IRM</b>	<b>X</b>			
<b>Umphathi Wolwazi</b>	<b>X</b>			
<b>UMphathi Okubikwa Kuye Ngokuqondile</b>				

**UMLANDO WOKUCHIBIYELWA**

Iqala ukusebenza kusukela	Uchibiyelwe Ngu-	Wabukezwa Ngu-	Wanconywa Ngu-	Wamukelwe Ngu-
2016	Nks P Nkosi	Nks T Jamba	Mmeli N Sithole	Mnu C Forlee
2023	Nks P Nkosi	Nks T Jamba	Nks F Harrison	Mmeli N Sithole

Umbhalo	Uhlobo	Inombolo Yefeksi	Isigaba Sokuphepha	UMnyango	Inombolo ye-Tanzwana	Usuku ekhishwe ngalo	
IMANUWALI YE-PAIA NE-POPIA	3	7/3/4/2/1	Ayibekwanga ngokwesigaba	I-IRM	NERSA-1532172523-68514	2022/23	Page 2 of 49

**Ithebula Lokuqokethwe**

(i)	ISENDLALO .....	4
(ii)	IGLOSARI NEZINCAZELO .....	5
(iii)	INHLOSO YEMANUWALI.....	8
1.	ISIQEPHU SOKU-1: UKWAKHEKA.....	10
2.	ISIQEPHU SESI-2: IMINININGWANE YOKUXHUMANA NABAGCINILWAZI...222	
3.	ISIQEPHU SESI-3: UMHLAMHLANDLELA NGOKUTHI ISETSHENZISWA KANJANI IMANUWALI .....	23
4.	ISIQEPHU SESI-4: UKUFINYELELEKA KUMAREKHODI.....	24
5.	ISIQEPHU SESI-5: IZINSIZAKALO EZITHOLAKALAYO .....	29
6.	ISIQEPHU SESI-6: AMALUNGISELELO AVUMELA UKUBAMBA IQHAZA KOMPHEKATHI EKWENZENI UMSEBENZI WOKUGUNYAZWA KWE-NERSA.32	
7.	ISIQEPHU SESI-7: ULWAZI MAYELANA NOKUVIKELWA KOLWAZI LOBUQU NJENGOBA KULINDELWE KWISAPHLUKO SE-14(1)(c) SE-PAIA.....	33
8.	ISIQEPHU SESI-8 : OKUNYE.....	37

**ISHEDULI YESI-1**

IZIMALI MAYELANA NEZINHLAKA ZIKAHULUMENI .....	39
------------------------------------------------	----

**ISHEDULI YESI-2**

IFOMU A .....	41
---------------	----

**ISHEDULI YESI-3**

IFOMU B.....	46
--------------	----

Umbhalo	Uhlobo	Inombolo Yefeksi	Isigaba Sokuphepha	UMnyango	Inombolo ye-Tanzwana	Usuku ekhishwe ngalo	
IMANUWALI YE-PAIA NE-POPIA	3	7/3/4/2/1	Ayibekwanga ngokwesigaba	I-IRM	NERSA-1532172523-68514	2022/23	Page 3 of 49

## (i) ISENDLALO

### Isisekelo somthetho kanye nesendlalelo semanuwali

#### **UMTHETHOSISEKELO WASERIPHABHLIKHI YASENINGIZIMU AFRIKA WONYAKA WE-1996**

Ilungelo lokufinyeleleka kolwazi liqukethwe kusahluko sama-33 soMthethosisekelo waseRiphabhlikhi yaseNingizimu Afrika we-1996 ("uMthethosisekelo"), elihlinzeka njengoba kulandela:

- (1) *Wonke umuntu unelungelo lokufinyeleleka –*
  - (a) *kunoma yiluphi ulwazi olugcinwe umbuso; futhi*
  - (b) *kunoma yiluphi ulwazi olugcinwe omunye umuntu futhi oludingekayo ukuze kusetshenziswe noma kuvikelwe nanoma yimaphi amalungelo.*
- (2) *Iqoqomthetho likazwelonke lifanele lenziwe umthetho ukuze lenze ukuba kusebenze leli lungelo futhi lingahlinzekela izinyathelo ezifanele zokuqeda ijoka lokuphatha nelezimali kumbuso.*

#### **UMTHETHO WOKUKHUTHAZA UKUFINYELELEKA KOLWAZI WONYAKA WE-2000**

Njengoba kushiwo ngenhla, uMthethosisekelo uhlinzeka ukuthi kushaywe umthetho kazwelonke ozokwenza ukuba kusebenze ilungelo lokufinyeleleka kolwazi.

Umthetho kazwelonke osushayiwe owenza leli lungelo lisebenze uMthetho Wokukhuthaza Ukufinyeleleka Kolwazi wonyaka we-2000 (uMthetho wesi-2 wonyaka we-2000) (i-PAIA noma 'uMthetho').

I-PAIA, nokho-ke, iyakwamukela ukuthi ilungelo elinjengaleli lokufinyeleleka kolwazi lingaphansi kwemikhawulo efanele futhi lifuna ukulinganisa ilungelo lomfakisicelo lokuthola ulwazi ngokomthethosisekelo ngokumelene nelungelo lomgcinilwazi lokwenqaba ukutholwa kolwazi nganoma yiziphi izizathu ezishiwo engxenyeni yesi-2, isiqephu sesi-4 se-PAIA. Imikhawulo enjengalena iyamukelwa kwi-PAIA kanye naseMthethweni Wokuvikelwa Kolwazi Lobuqu wonyaka we-2013 (uMthetho wesi-4 wonyaka we-2013) (i-POPIA), njengoba ucacisa izimo lapho kuzoba nomkhawulo noma ukubekelwa imikhawulo yokufinyeleleka kolwazi olugcinwe uMbuso.

Umbhalo	Uhlobo	Inombolo Yefeksi	Isigaba Sokuphepha	UMnyango	Inombolo ye-Tanzwana	Usuku ekhishwe ngalo	
IMANUWALI YE-PAIA NE-POPIA	3	7/3/4/2/1	Ayibekwanga ngokwesigaba	I-IRM	NERSA-1532172523-68514	2022/23	Page 4 of 49

Isahluko se-14(1) soMthetho Wokukhuthaza Ukufinyeleka Kolwazi sihlizeka ngokuthi kungakapheli izinyanga eziyisithupha ngemuva kokuqala kokusebenza kwalesi sahluko noma sokuba khona kohlaka lukahulumeni, umgcinilwazi wohlaka lukahulumeni oluthintekayo ufanele akhe imanuwali okungenani ngezilimi ezintathu (3) ezisemthethweni. Imanuwali ifanele iqukathe, kokunye, ukwakheka nemisebenzi yohlaka lukahulumeni kanye ne-indekhsi yamarekhodi asezandleni zohlaka lukahulumeni. Isahluko se-14(2) soMthetho siphinde sihlizeke ukuthi uhlaka lukahulumeni lufanele, uma kunesidingo, lufake ulwazi lwakamuva futhi lushicilele imanuwali yalo ngezikhathi ezithile ezingekho ngaphezu konyaka. Okokugcina, isahluko se-14(3) sihlizeka ukuthi imanuwali ifanele yenziwe njengoba kumiswe yisahluko se-14(1) soMthetho.<sup>123</sup>

## (ii) IGLOSARI NEZINCAZELO

AMAGAMA	INCAZELO
<b>Isihloko somniningo</b>	Umuntu olwazi lwakhe lobuqu luhlobene naye
<b>Umbhalo</b>	Nanoma yikuphi ukwaziswa noma ukubhala, kungakhathaliseki ukuthi kukhiqizwe ngesandla noma ngokugaywa noma ngokubhala ngomshini noma ngananoma iyiphi enye inqubo efanayo nalena ngendlela ephathekayo noma ye-elekthronikhi. Nanoma iyiphi ikhophi, ipulani, umdwebho noma isithombe noma okunye ukumelwa kwanoma iyiphi indawo noma kwe-athikili
<b>Umhlahlandlela</b>	Umhlahlandlela wokuthi isetshenziswa kanjani i-PAIA yinoma yimuphi umuntu ofisa ukusebenzisa nanoma yiliphi ilungelo elihlongozwe kwi-PAIA kanye naseMthethweni Wokuvikelwa Kolwazi Lobuqu wonyaka we-2013 (uMthetho wesi-4 wonyaka we-2013), njengoba kuhlangozwe esahlukweni se-10 se-PAIA.
<b>UMgcinilwazi</b>	U-CEO we-NERSA
<b>Umlawuli Wolwazi</b>	Umlawuli Wolwazi owasungulwa ngokwesahluko sama-39 soMthetho Wokuvikelwa Kolwazi Lobuqu wonyaka we-2013
<b>Ulwazi Lobuqu</b>	Ulwazi oluhlobene nomuntu onokuhlonzwa, ophilayo, owemvelo, kubandakanya:

<sup>1</sup> wesi-2 wonyaka we-2002.

<sup>2</sup> UMthetho Wokukhuthaza Ukufinyeleleka Kolwazi wesi-2 wonyaka we-2000.

<sup>3</sup> Isahluko se-14(3) ne-14(1) soMthetho Wokukhuthaza Ukufinyeleleka Kolwazi wesi-2 wonyaka we-2000.

Umbhalo	Uhlobo	Inombolo Yefeksi	Isigaba Sokuphepha	UMnyango	Inombolo ye-Tanzwana	Usuku ekhishwe ngalo	Page 5 of 49
IMANUWALI YE-PAIA NE-POPIA	3	7/3/4/2/1	Ayibekwanga ngokwesigaba	I-IRM	NERSA-1532172523-68514	2022/23	

AMAGAMA	INCAZELO
	<ul style="list-style-type: none"> <li>- uhlanga, ubulili, ukukhulelwa, isimo somshado, ubuzwe, umbala, ukukhetha ubulili, ubudala, impilo ngokomzimba noma ngokwengqondo, ukuba nokukhubazeka, inkolo, inkolelo, isiko, ulimi nokuzalwa komuntu</li> <li>- umlando wezemfundo, wezokwelashwa, wezezimali, wobugebengu noma owokusebenza</li> <li>- nanoma iyiphi inombolo ehlonzayo, uphawu, ikheli le-imeyili, ikheli lendawo, inombolo yocingo, imininingwane yendawo, isihlonzi esiku-inthanethi noma esinye esabelwe umuntu</li> <li>- ulwazi lweminwe yomuntu</li> <li>- igama lomuntu uma livela nolunye ulwazi lobuqu oluhlobene nomuntu noma uma ukudalulwa kwegama ngokwalo kuzoveza ulwazi mayelana nomuntu</li> <li>- incwadi eyimfihlo noma esobala yohlobo lwangasese noma oluyimfihlo ethunyelwa ngumuntu</li> </ul>
<b>Umuntu ozicelela yena</b>	Umuntu ocela ukufinyeleleka kwirekhodi eliqukethe ulwazi lobuqu mayelana nomfakisicelo
<b>Uhlaka lomphakathi</b>	Lucela ulwazi lulucelela umphakathi
<b>Irekhodi</b>	<p>Irekhodi liwubufakazi bokwenza ibhizinisi (elakhiwe noma elitholiwe) ekuvezweni kwalo kokugcina, elakhiwe ekuqaleni njengombhalo, njengoba kwakubikezelwe eMthethweni Kazwelonke Wokugcinwa Kwemibhalo Kwizingodlamagugu wonyaka we-1996.</p> <p><u>Ukwenziwa kwebhizinisi kungahle:</u></p> <ul style="list-style-type: none"> <li>• kubandakanye izenzo zokubhala phansi</li> <li>• izigameko</li> <li>• izingxoxiswano noma okunye ukuthengiselana lapho benikeza ubufakazi bezincomo noma bezinqumo (izincwadi, amaminithi emihlangano)</li> <li>• amarekhodi ezingxoxiswano nezingcingo</li> <li>• amafeksi</li> <li>• ama-imeyili</li> </ul>

Umbhalo	Uhlobo	Inombolo Yefeksi	Isigaba Sokuphepha	UMnyango	Inombolo ye-Tanzwana	Usuku ekhishwe ngalo	Page 6 of 49
IMANUWALI YE-PAIA NE-POPIA	3	7/3/4/2/1	Ayibekwanga ngokwesigaba	I-IRM	NERSA-1532172523-68514	2022/23	

AMAGAMA	INCAZELO
	• okunye ukuxhumana
<b>Ukuphathwa kwamarekhodi</b>	Inqubo yokuqinisekisa ukwakhiwa okufanele, ukugcinwa, ukusetshenziswa kanye nokulahlwa kwamarekhodi efanele kuwo wonke umjikelezo wawo wokuphila ukuze kube nokwengamela okuyimpumelelo, okusobala nokuphendulayo
<b>Isicelo</b>	Isicelo sokufinyeleleka kwirekhodi le-NERSA
<b>Umfakisiselo</b>	Nanoma yimuphi umuntu (ngaphandle kohlaka lukahulumeni oluhlongozwe esigabeni (a) noma (b)(i) sencazelo 'yohlaka lukahulumeni' ku-PAIA, noma isikhulu sakhe) owenza isicelo sokuthola irekhodi le-NERSA futhi ubandakanya nanoma yimuphi umuntu omele lowo muntu noma ofakelwa isicelo
<b>Isikhathi sokugcina imibhalo</b>	Ubude besikhathi esidingekayo ngokomthetho amarekhodi azogcinwa sona ekugcinweni kwingodlamagugu ngaphambi kokuba acekelwe phansi
<b>Ukubuyiswa kwamarekhodi</b>	Kubhekisela endleleni amarekhodi afinyeleleka ngayo kanye nokutholakala kokufinyeleleka kwawo lapho edingeka
<b>Ukuskena amarekhodi</b>	Ukuguqulwa kwamarekhodi ayiphepha asiwe ohlotsheni lwe-elekthronikhi (i-PDF) ukuze kuqinisekise ukuthi irekhodi lihlala liqinisekisiwe, lithembekile futhi liyasebenziseka ngasonke isikhathi sokugcinwa kwalo. Ukuguqulwa kuyinqubo yokushintsha amarekhodi esuswa ohlotsheni olulodwa esiwa kolunye
<b>Uhlelo le-Tanzwana</b>	Isizinda se-inthanethi esisekelwe kwi- <i>Microsoft (i-SharePoint)</i> esisetshenziselwa ukusebenzisana nokuphathwa kwemibhalo namarekhodi e-elekthronikhi
<b>Umfakisiselo oyingxenye yesithathu</b>	Umuntu ocela ulwazi ngomunye umuntu

## IZIFINYEZO

Izifinyezo	Incazelo
<b>U-CEO</b>	Isikhulu Esingumphathi Omkhulu

Umbhalo	Uhlobo	Inombolo Yefeksi	Isigaba Sokuphepha	UMnyango	Inombolo ye-Tanzwana	Usuku ekhishwe ngalo	Page 7 of 49
IMANUWALI YE-PAIA NE-POPIA	3	7/3/4/2/1	Ayibekwanga ngokwesigaba	I-IRM	NERSA-1532172523-68514	2022/23	

<b>U-DIO</b>	USekela-Mgcinilwazi
<b>I-ER</b>	Umlawuli Wezamandla
<b>U-HOD</b>	INhloko Yomnyango
<b>I-ICT</b>	Ubuchwepheshe Bolwazi Nokuxhumana
<b>U-IO</b>	UMgcinilwazi
<b>I-IR</b>	Umlawuli Wolwazi
<b>I-IRM</b>	Ukuphathwa Kwemithombo Yolwazi
<b>I-ISO</b>	Inhlangano Yamazwe Ngamazwe Yokumiswa Kwamazinga
<b>I-LAS</b>	Izinsizo Zokweluleka Komthetho
<b>I-MISS</b>	Izinga Elincane Lokuvikeleka Kolwazi
<b>I-NERSA</b>	Umlawuli Kazwelonke Wezamandla WaseNingizimu Afrika
<b>I-PAIA</b>	UMthetho Wokukhuthaza Ukufinyeleleka Kolwazi wonyaka we-2000 (uMthetho wesi-2 wonyaka we-2000)
<b>I-POPIA</b>	UMthetho Wokuvikelwa Kolwazi Lobuqu wonyaka we-2013 (uMthetho wesi-4 wonyaka we-2013)
<b>I-RMC</b>	Isikhungo Sokuphathwa Kwamarekhodi
<b>I-SAHC</b>	IKhomishani YaseNingizimu Afrika Yamalungelo EsiNtu

### (iii) INHLOSO YEMANUWALI

Ukuze kukhuthazwe ukwenganyelwa ngempumelelo kwezinhloko zikahulumeni, kubalulekile ukuqinisekisa ukuthi bonke abantu banamandla futhi bangafundiswa ukuba baqonde amalungelo abo ngokwemibandela yalo Mthetho.

Le manuwali kuhloswe ngayo ukugxilisa isiko lobusobala nelokuziphendulela ngokwenza ukuthi ilungelo lokufinyeleleka kolwazi oludingekayo lisetshenziswe noma kuvikelwe nanoma iliphi ilungelo futhi kukhuthazwe ngokubonakalayo umphakathi lapho abantu baseRiphabhlikhi yaseNingizimu Afrika benokufinyeleleka ngokubonakalayo olwazini ukuze bakwazi ukusebenzisa nokuvikela amalungelo abo ngokuphelele.

Le manuwali ilindele ukunikeza umhlahlandlela omkhulu, futhi olandayo ozokwenza ukuba umuntu ocela ukufinyeleleka kolwazi ('uMfakisicelo') akwazi ukuthola amarekhodi anelungelo lokuwathola

Umbhalo	Uhlobo	Inombolo Yefeksi	Isigaba Sokuphepha	UMnyango	Inombolo ye-Tanzwana	Usuku ekhishwe ngalo	Page 8 of 49
IMANUWALI YE-PAIA NE-POPIA	3	7/3/4/2/1	Ayibekwanga ngokwesigaba	I-IRM	NERSA-1532172523-68514	2022/23	



ngokushesha, ngendlela elula nefinyelelekayo kubhekwa inhlosombono nesitatimende sentshisekelo ye-NERSA, okuyilokhu okulandelayo:

**Inhlosombono ye-NERSA**

***Ukuba ibonwe njengomholi womhlaba ekulawulweni kwezamandla***

**Intshisekelo ye-NERSA**

***Ukulawula imboni yezamandla ngokuhambelana  
nemithetho nezinqubomgomo zikahulumeni, namazinga kanye  
nezinqubo ezingcono zomhlaba ekusekelweni  
kwentuthuko esimeme nehlelekile***

Isahluko sesi-9(b)(i) soMthetho, kodwa-ke, samukela ukuthi ilungelo elifana naleli lokufinyeleleka kolwazi alinakubekelwa mkhawulo futhi lifanele libe nemikhawulo esekelekayo, kubandakanya kodwa kungapheleli, emikhawulweni okuhloswe ngayo ukuvikelwa okufanele:<sup>4</sup>

- kobumfihlo;
- kobumfihlo bezohwebo;
- kokwengamela kangcono, ngempumelelo nakahle.

<sup>4</sup> *UMthetho Wokukhuthaza Ukufinyeleleka Kolwazi wesi-2 wonyaka we-2000.*

Umbhalo	Uhlobo	Inombolo Yefeksi	Isigaba Sokuphepha	UMnyango	Inombolo ye-Tanzwana	Usuku ekhishwe ngalo	
IMANUWALI YE-PAIA NE-POPIA	3	7/3/4/2/1	Ayibekwanga ngokwesigaba	I-IRM	NERSA-1532172523-68514	2022/23	Page 9 of 49

## ISIQEPHU SOKU-1

### 1. UKWAKHEKA

#### 1.1 UKWAKHEKA KWE-NERSA

Umlawuli Kazwelonke Wezamandla (i-NERSA) uyisiphathimandla esingumlawuli wemboni yezamandla yaseRiphabhlikhi yaseNingizimu Afrika. I-NERSA iyinhlangano esemthethweni, esungulwe ngokweSahluko sesi-3 soMthetho Kazwelonke Womlawuli Wezamandla wonyaka we-2004 (uMthetho wama-40 wonyaka we-2004) ('uMthetho Kazwelonke Womlawuli Wezamandla').

I-NERSA igunyazwe ukuba ilawule ugesi, igesi ehamba ngamapayipi kanye nezimboni zophethiloli wamapayipi ngokoMthetho Wokulawulwa Kogesi wonyaka we-2006 (uMthetho wesi-4 wonyaka we-2006) ('uMthetho Wokulawulwa Kogesi'), uMthetho Wegesi wonyaka we-2001 (uMthetho wama-48 wonyaka we-2001) ('uMthetho Wegesi') kanye noMthetho Wophethiloli Wamapayipi wonyaka we-2003 (uMthetho wama-60 wonyaka we-2003) ('uMthetho Wophethiloli Wamapayipi').

Ukwakheka kwe-NERSA kunamagatsha ayisikhombisa, amathathu angalawulayo futhi amane ayalekelela. Lawa magatsha aphehwe aBaphathi Abakhulu futhi iminyango engaphakathi kula magatsha iphehwe yiZinhloko Zeminyango. Kukhona amayunithi akhethekile ngaphakathi kwisakhiwo aphehwe aBaphathi Abakhulu.

Izimboni ezintathu ezingabalawuli zinjengoba zilandela:

- IGatsha Lokulawulwa Kogesi elakhiwe iminyango elandelayo:
  - Ukukhishwa Kwezimvume Zogesi, ukuHlonishwa Komthetho kanye Nokuxazululwa Kwezingxabano
  - Ukubekwa Kwezintengo Nentela Kagesi
  - UkuHlelelwa Kwezingqalasizinda Zikagesi.
- IGatsha Lokulawulwa Kwegesi Ehamba Ngamapayipi lakhiwe iminyango elandelayo:
  - Ukukhishwa Kwezimvume, ukuHlonishwa Komthetho kanye Nokuxazululwa Kwezingxabano Zegesi
  - Ukubekwa Kwentengo Nentela Yegesi
  - Ukuncintisana Kwigesi kanye Nokuhlaziywa Kwemakethe.
- IGatsha Lokulawulwa Kophethiloli Wamapayipi lakhiwe iminyango elandelayo:

Umbhalo	Uhlobo	Inombolo Yefeksi	Isigaba Sokuphepha	UMnyango	Inombolo ye-Tanzwana	Usuku ekhishwe ngalo	
IMANUWALI YE-PAIA NE-POPIA	3	7/3/4/2/1	Ayibekwanga ngokwesigaba	I-IRM	NERSA-1532172523-68514	2022/23	Page 10 of 49

- Ukukhishwa Kwezimvume Zophethiloli Wamapayipi, ukuHlonishwa Komthetho kanye Nokuxazululwa Kwezingxabano
- Izintela Zophethiloli Wamapayipi.

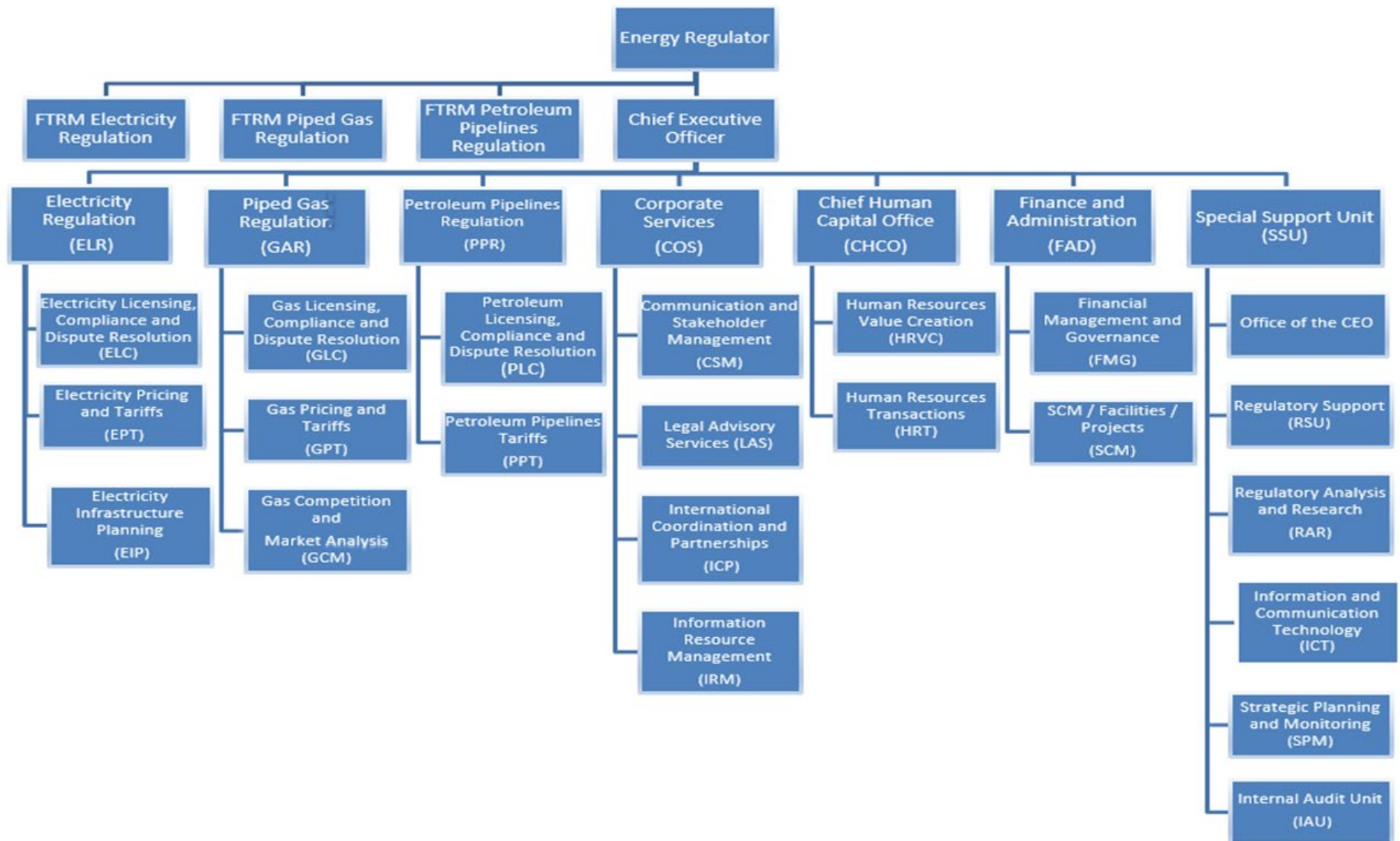
Amagatsha asekelalayo ame njengoba kulandela:

- IGatsha Lezinsizakalo Zenhlangano lakhiwe iminyango elandelayo:
  - Ukuphathwa Kwezoxhukumana Nokusetshenziswana Nabo
  - Izinsizo Zokweluleka Komthetho
  - Ukuhlela Nokubanjiswana Kwamazwe Omhlaba
  - Ukuphathwa Komthombo Wolwazi.
- IGatsha Lezabasebenzi lakhiwe okulandelayo:
  - Ukwakhiwa Kokubaluleka Kwezabasebenzi
  - Imisebenzi Yezabasebenzi.
- IGatsha Lezezimali Nokuphatha lakhiwe okulandelayo:
  - Ukuphathwa Kwezezimali Nokwengamela
  - I-SCM/Izakhiwo/Amaphrojekhthi.
- Amayuthi Okusekela Okukhethekile akhiwe njengoba kulandela:
  - IHhovisi lika-CEO
  - Ukusekelwa Komlawuli
  - Ukuhlaziya Nocwaningo Lokulawula
  - Ubuchwepheshe Bolwazi Nokuxhumana
  - Ukuhlelwa Nokuqashwa Kwamasu
  - UPhiko Locwaningo-Mabhuku Lwangaphakathi.

Umdwebo wokwakheka okuphelele (i-oganogramu) ungawuthola ekhasini elilandelayo.

Umbhalo	Uhlobo	Inombolo Yefeksi	Isigaba Sokuphepha	UMnyango	Inombolo ye-Tanzwana	Usuku ekhishwe ngalo	
IMANUWALI YE-PAIA NE-POPIA	3	7/3/4/2/1	Ayibekwanga ngokwesigaba	I-IRM	NERSA-1532172523-68514	2022/23	Page 11 of 49

1.2 UMDWEBO OHLELEKILE WOKWAKHEKA (I-OGANOGRAMU YE-NERSA)



Umbhalo	Uhlobo	Inombolo Yefeksi	Isigaba Sokuphepha	UMnyango	Inombolo ye-Tanzwana	Usuku ekhishwe ngalo	
IMANUWALI YE-PAIA NE-POPIA	3	7/3/4/2/1	Unclassified	I-IRM	NERSA-1532172523-68514	2022/23	Page 12 of 49

### 1.3 UKWAKHEKHA KWESIKHUNGO

#### 1.3.1 Amalungu Omlawuli

Ngokwesahluko sesi-5 soMthetho Womlawuli Wezamandla, uNgqongqoshe Womnyango Wezamandla uqoka aMalungu Omlawuli ayi-9.

1.3.1.1 Kula Malungu Omlawuli ayisishiyagalolunye:

- amane ngaMalungu Omlawuli Asebenza Ngokuphelele (ama-FTRM) futhi abamba isikhundla isikhathi esiyiminyaka emihlanu; kanye
- namahlanu angaMalungu Omlawuli Asebenza Ngokungaphelele (ama-PTRM) futhi abamba isikhundla isikhathi esiyiminyaka emine.

1.3.1.2 USihlalo kanye noSekela-Sihlalo Bangamalungu Omlawuli asebenza ngokungaphelele.

1.3.1.3 Amalungu Omlawuli Asebenza Ngokuphelele yilawa:

- Isikhulu Esinguphathi Omkhulu; kanye
- NaMalungu amathathu abheke ikakhulu ukulawulwa Kogesi, kwegesi yamapayipi kanye nokulawulwa kophethiloli wamapayipi ngokulandelana.

#### 1.3.2 Amakomijana Okulawula

Ngokwesahluko sesi-8(10) soMthetho Kazwelonke Womlawuli Wezamandla, uMlawuli Wezamandla angasungula amakomijana ukuze enze imisebenzi ekhethekile. Amakomijana Okulawula avulelekile emphakathini, ngaphandle kwalapho kucutshungulwa imidanti eyimfihlo. Amakomijana anjengalawa alandelayo:<sup>5</sup>

##### 1.3.2.1 IKomijana Likagesi (i-ELS)

- Amalungu ayisithupha (onke womane ama-FTRM kanye nama-PTRM amabili)
- Liphethwe usihlalo we-FTRM yokuLawulwa Kogesi
- Imihlangano yanyanga zonke

##### 1.3.2.2 IKomijana Legesi Yamapayipi (i-PGS)

- Amalungu ayisithupha (onke womane ama-FTRM kanye nama-PTRM amabili)
- Eliphethwe usihlalo we-FTRM yokuLawulwa Kukaphethiloli Wamapayipi

---

Umbhalo	Uhlobo	Inombolo Yefeksi	Isigaba Sokuphepha	UMnyango	Inombolo ye-Tanzwana	Usuku ekhishwe ngalo	Page 13 of 49
IMANUWALI YE-PAIA NE-POPIA	3	7/3/4/2/1	Unclassified	I-IRM	NERSA-1532172523-68514	2022/23	

- Imihlangano yanyanga zonke

1.3.2.3 IKomijana Lomlawuli Wamapayipi Kaphethiloli (i-PPS)

- Amalungu ayisithupha (onke womane ama-FTRM kanye nama-PTRM amabili)
- Liphethwe usihlalo we-FTRM yokuLawulwa Kukaphethiloli Wamapayipi
- Imihlangano yanyanga zonke

**1.3.3 Amakomidi Angenelayo**

1.3.3.1 IKomidi Elikhululu Lomlawuli (i-REC)

- Amalungu Amane – onke womane ama-FTRM
- Liphethwe u-CEO
- Imihlangano ibanjwa kabili ngenyanga
- Ikomidi licubungula okwenziwayo kokulawula njengoba kunxuse uMlawuli Wezamandla eNdaweni Yokunxuswa, kanye nasemidantini yokusebenza

**1.3.4 Ikomidi Lokwengamela – alivulelekanga emphakathini:**

1.3.4.1 IKomidi Lezabasebenzi Nemihlo (i-HRRC)

- Amalungu amahlanu – ama-FTRM amabili, ama-PTRM amabili kanye noyedwa oyiLungu Langaphandle
- Liphethwe usihlalo oyiLungu Elisebenza Ngokungaphelele
- Lihlangana njalo ngekota

1.3.4.2 IKomidi Lezezimali (i-FIC)

- Amalungu amahlanu – ama-FTRM amabili, ama-PTRM amabili kanye noyedwa oyiLungu Langaphandle
- Liphethwe usihlalo oyiLungu Elisebenza Ngokungaphelele
- Lihlangana njalo ngekota

1.3.4.3 IKomidi Locwaningomabhuku kanye Nengozi (i-ARC)

- Amalungu ayisithupha – ama-PTRM amabili, aMalungu Angaphandle amabili kanye nabamenyiwe ababili
- Eliphethwe usihlalo oyiLungu Elisebenza Ngokungaphelele noma iLungu Langaphandle
- USihlalo Womlawuli Wezamandla kanye no-CEO bayizimanywa
- Lihlangana njalo ngekota

1.3.4.4 IKomidi Lokwengamela Ulwazi Nobuchwepheshe (i-ITGC)

- Amalungu amahlanu – ama-FTRM amabili, ne-PTRM eyodwa w kanye nababili aBangamalungu Angaphandle

Umbhalo	Uhlobo	Inombolo Yefeksi	Isigaba Sokuphepha	UMnyango	Inombolo ye-Tanzwana	Usuku ekhishwe ngalo	
IMANUWALI YE-PAIA NE-POPIA	3	7/3/4/2/1	Ayibekwanga ngokwesigaba	I-IRM	NERSA-1532172523-68514	2022/23	Page 14 of 49

- Liphethwe usihlalo oyiLungu Elisebenza Ngokungaphelele
- Lihlangana njalo ngekota

## **1.4 IMISEBENZI NEZINSIZAKALO ZE-NERSA**

### **1.4.1 UKUGUNYAZWA KOMTHETHOSISEKELO**

1.4.1.1 Umlawuli Kazwelonke Wezamandla WaseNingizimu Afrika usohlwini njengohlaka lukahulumeni ngokwesheduli yesi-3A yoMthetho Wokuphathwa Kwezimali Zikahulumeni wonyaka we-1999 (uMthetho woku-1 wonyaka we-1999).

1.4.1.2 Ekwenzeni umsebenzi wayo i-NERSA ilawulwa nguMthethosisekelo waseNingizimu Afrika, ikakhulukazi uSomqulu Wamalungelo.

1.4.1.3 Isibopho se-NERSA senziwa ngokunikeza izimvume, ukuhlela noma nokugunyazwa kwezintengo nezintela, ukuhlonishwa kokuqapha nokuphoqelelwa komthetho, kanye nokuxazululwa kwezingxabano embonini kagesi, yegesi yamapayipi kanye nophethiloli wamapayipi. Isiza, ngemisebenzi yayo yokulawula, ukwakhiwa kweziteshi zikagesi, amapayipi kanye nezindawo zokugcina ukuze kuqinisekiswa ukufinyeleka okuqhubekayo kwamandla kanye nokuvikeleka kokuwaphakelwa ezweni. Ukuzibophezela kwe-NERSA ekuvikeleni kwemvelo kanye nokukhula komkhiqizo wamandla ohlanzekile, onemithombo engcono kakhudlwana yamandla eyakhelwe emisebenzini yayo yokulawula.

## **1.5 UKUGUNYAZWA KOMTHETHO KANYE NOKWEZINQUBOMGOMO**

### **1.5.1 Imithetho Efanele**

1.5.1.1 I-NERSA isiphathimandla sokulawula esasungulwa ngokoMthetho Kazwelonke Wokulawulwa Kogesi wonyaka we-2004 (uMthetho wama-40 wonyaka we-2004) njengoba ubaluliwe kuMthetho Wokulawulwa Kogesi wonyaka we-2006 (uMthetho wesi-4 wonyaka we-2006), eMthethweni Wegesi wonyaka we-2001 (uMthetho wama-48 wonyaka we-2001) , yenza imisebenzi yesiPhathimandla Sokulawulwa Kukaphethiloli Wamapayipi njengoba ubaluliwe eMthethweni Kaphethiloli Wamapayipi wonyaka we-2003 (uMthetho wama-60 wonyaka we-2003) kanye nokwenza eminye imisebenzi enjengalena njengoba inganikezwa yona yile Mithetho noma ngokwale Mithetho.

Umbhalo	Uhlobo	Inombolo Yefeksi	Isigaba Sokuphepha	UMnyango	Inombolo ye-Tanzwana	Usuku ekhishwe ngalo	
IMANUWALI YE-PAIA NE-POPIA	3	7/3/4/2/1	Ayibekwanga ngokwesigaba	I-IRM	NERSA-1532172523-68514	2022/23	Page 15 of 49

1.5.1.2 Ukugunyazwa kwe-NERSA kusekelwe eMithethweni eyisisekelo emine elandelayo:

- UMthetho Kazwelonke Womlawuli Wezamadla wonyaka we-2004 (uMthetho wawa-40 wonyaka we-2004)
- UMthetho Wokulawulwa Kogesi wonyaka we-2006 (uMthetho wesi-4 wonyaka we-2006)(i-ERA)
- UMthetho Wegesi wonyaka we-2001 (uMthetho wama-48 wonyaka we-2001)
- UMthetho Kaphethiloli Wamapayipi wonyaka we-2003 (uMthetho wama-60 wonyaka we-2003).

1.5.1.3 Imisebenzi yokulawula ye-NERSA, njengoba iqukethwe emthethweni ofanele wokulawulwa kwemboni yezamadla, ifinyezwe kanje:

- Ukukhipha izimvume ezinemibandela
- Ukubeka kanye/noma nokugunyaza izintela nezintengo
- Ukuqapha kanye nokuphoqelela ukuthotshelwa kwemithetho yezimvume ezinemibandela
- Ukuxazulula izingxabano, kubandakanya ukulamula, ukuhlulela kanye nokusingathwa kwezikhalazo
- Ukuqoqa, ukugcina nokusabalalisa ulwazi lwemboni
- Ukumiswa kwemithetho, imihlahlandlela kanye namarekhodi okulawulwa kwalezi zimboni ezintathu
- Ukunquma izimo zokuphakelwa kanye namazinga asebenzayo
- Ukuxhumana, lapho kunesidingo, neMinyango Kahulumeni kanye nezinye izinhloko nezikhungo maqondana nanoma iluphi udaba olucatshangwa kule Mithetho emithathu;
- Ukuthatha umhlaba ngokomthetho njengoba kudingeka ukuze kufezwe izinhloso zomthetho ofanele
- Ukubhaliswa kwezindawo zokungenisa impahla kanye nezindawo zokuyikhiqiza
- Ukwenza nanoma yimuphi umsebenzi ohambisana nokwenziwa kwemisebenzi yayo.

Umbhalo	Uhlobo	Inombolo Yefeksi	Isigaba Sokuphepha	UMnyango	Inombolo ye-Tanzwana	Usuku ekhishwe ngalo	
IMANUWALI YE-PAIA NE-POPIA	3	7/3/4/2/1	Ayibekwanga ngokwesigaba	I-IRM	NERSA-1532172523-68514	2022/23	Page 16 of 49



1.5.1.4 UMthetho ngamunye oqondene nembali ethile lapho i-NERSA ithola khona ukugunyazwa kwayo unezinhliso ezithile okufanele zifezwe uma i-NERSA yenza imisebenzi yayo njengoba ichazwe kule Mithetho.

a) Izinhliso zoMthetho Wokulawulwa Kogesi, njengoba zibalulwe esahlukweni sesi-2, yilezi:

- ukuthola intuthuko esebenza kahle, eyimpumelelo, esimeme futhi ehlekile kanye nokusebenza kwezingqalasisinda zokuphakelwa kogesi eNingizimu Afrika;
- ukuqinisekisa ukuthi izintshisekelo nezidingo zamakhasimende kanye nabasebenzisi bakogesi bamanje nabesikhathi esizayo zivikelwe futhi zihlangatsheziwe, kubhekwa ukwengamela, ukusebenza okuhle, ukusebenza okuyimpumelelo nokusimeme kwesikhathi eside kwembali yokuphakelwa kogesi ngaphakathi kwengqikithi ebanzi yokulawulwa kwamandla ezomnotho eRiphabhulikhi;
- ukwenza lula ukutshalwa kwezimali embonini yokuphakelwa kogesi;
- ukwenza lula ukufinyeleleka kogesi;
- ukukhuthaza ukusetshenziswa kwemithombo ehlukehlukene yamandla kanye nokusebenza kahle kwezamandla;
- ukuthuthukisa ukuncintisana kanye nokukhetha kwamakhasimende nabasebenzisi; futhi
- nokwenza kube lula ukulingana okuphakathi kwezintshisekelo zamakhasimende nabasebenzisi, abanezimvume, abatshalizimali embonini yokuphakela ugesi emphakathini.

b) Izinhliso zoMthetho Wegesi, njengoba zibalulwe esahlukweni sesi-2, yilezi:

- ukukhuthaza ukuthuthukiswa okusebenzayo, okuyimpumelelo, okusimeme nokuhlekile kanye nokusebenzayo kokuhambisa igesi, ukugcinwa, ukusatshalaliswa, ukuxutshwa kwegesi kanye nokwenziwa kabusha kwegesi ezindaweni kanye nokuhlinzekwa kwegesi ngempumelelo, kanye nezinsizakalo zokuhweba;
- ukwenza lula ukutshalwa kwezimali embonini yokuphakelwa kwegesi;

Umbhalo	Uhlobo	Inombolo Yefeksi	Isigaba Sokuphepha	UMnyango	Inombolo ye-Tanzwana	Usuku ekhishwe ngalo	
IMANUWALI YE-PAIA NE-POPIA	3	7/3/4/2/1	Ayibekwanga ngokwesigaba	I-IRM	NERSA-1532172523-68514	2022/23	Page 17 of 49

- ukuqinisekisa ukudluliswa, ukusatshalaliswa, nokugcinwa, ukuxutshwa, nokweziwa kabusha kwegesi okuphephile, okuyimpumelelo, okungabizi kanye nokubhekela imvelo;
  - ukugqugquzela izinkampani embonini yegesi eziphethwe noma ezilawulwa abantu baseNingizimu Afrika ababencishwe amathuba phambilini ngokusebenzisa imibandela yezimvume ukuze bakwazi ukuncintisana;
  - ukuqinisekisa ukuthi izinsizakalo zokudluliswa, ukugcinwa, ukusatshalaliswa, ukuhweba, ukuxutshwa kanye nokwenziwa kabusha kwegesi zihlinzekwa ngendlela elinganayo nokuthi izintshisekelo nezidingo zabo bonke abathintekayo ziyacatshangelwa;
  - ukukhuthaza ukuthuthukiswa kwamakhono phakathi kwabasebenzi embonini yegesi;
  - ukukhuthaza ukulingana emsebenzini embonini yegesi;
  - ukukhuthaza ukwakhiwa kwezimakethe ezincintisanayo zegesi nezezinsizakalo zegesi;
  - ukwenza lula ukuhwebelana ngegese phakathi kweRiphabhulikhi namanye amazwe; futhi
  - nokukhuthaza ukufinyeleleka kwegesi ngendlela ethengekayo nephephile.
- c) Izinhloso zoMthetho Kaphethiloli Wamapayipi, njengoba zibalulwe esahlukweni sesi-2, yilezi:
- ukukhuthaza ukuncintisana ekwakhiweni nasekusebenzeni kwamapayipi kaphethiloli, kwezindawo zokuwulayisha kanye nezindawo zokuwugcina;
  - ukukhuthaza ukuthuthukiswa okusebenzayo, okuyimpumelelo, okusimeme nokuhlelekile, ukusebenza nokusetshenziswa kwamapayipi kaphethiloli, kwezindawo zokuwulayisha kanye nezindawo zokuwugcina;
  - ukuqinisekisa ukuthuthwa, ukulayishwa, ukugcinwa okuphephile, okuyimpumelelo, okungabizi nokubhekela imvelo kukaphethiloli;
  - ukukhuthaza ukufinyeleleka ngokulinganayo kumapayipi kaphethiloli, ezindaweni zokuwulayisha kanye nasezindaweni zokuwugcina;
  - ukwenza lula ukutshalwa kwezimali embonini yophethiloli wamapayipi;
  - ukuhlinzekela ngokuvikeleka kwamapayipi kaphethiloli kanye nezingqalasizinda ezihlobene nakho;

Umbhalo	Uhlobo	Inombolo Yefeksi	Isigaba Sokuphepha	UMnyango	Inombolo ye-Tanzwana	Usuku ekhishwe ngalo	
IMANUWALI YE-PAIA NE-POPIA	3	7/3/4/2/1	Ayibekwanga ngokwesigaba	I-IRM	NERSA-1532172523-68514	2022/23	Page 18 of 49

- ukugqugquzela izinkampani embonini yophethiloli wamapayipi eziphethwe noma ezilawulwa abantu baseNingizimu Afrika ababencishwe amathuba ngaphambilini, ngokusebenzisa imibandela yezimvume ukuze bakwazi ukuncintisana;
  - ukukhuthaza ukuthuthukiswa kwezimakethe ezincintisanayo zemikhiqizo kaphethiloli;
  - ukukhuthaza ukufinyeleleka emikhiqizweni kaphethiloli ethengekayo; kanye
  - nokuqinisekisa ukuphakelwa kukaphethiloli okufanele okuhlangabezana nezidingo zemakethe.
- d) Inhloso yoMthetho Kazwelonke Wokulawulwa Kwezamandla, njengoba ibalulwe esahlukweni soku-1, ukusungula uMlawuli Kazwelonke Wezamandla ozokulawula izimboni zogesi, zegesi yamapayipi kanye nezophethiloli wamapayipi.
- 1.5.1.5 UMthetho Wokulawulwa Kogesi, uMthetho Wegesi kanye noMthetho Kaphethiloli Wamapayipi unikeza uNgqongqoshe Wezimbiwa Namandla ('uNgqongqoshe') amandla okwenza iZimiso i-NERSA okufanele yenze umsebenzi ngazo.

- a) UNgqongqoshe ushicilele lezi Zimiso Zembali Kogesi ezilandelayo.
- IZimiso Zikagesi Zokudliwa Kwempahla egameni lomnikazi wemvume
  - IZimiso Zikagesi zemigomo namazinga ayimpoqo emisebenzi yokusatshalaliswa kogesi
  - Izimiso Zikagesi ngokuchezuka ezindlekweni ezibekiwe noma ezigunyaziwe
  - IZimiso Ezibuyekeziwe Zesizukulwane Esisha zakhishwa mhla zi-4 Meyi 2011.
- b) UNgqongqoshe ushicilele iZimiso Zembali Yegesi Yamapayipi mhla zi-20 April 2007, ezikhuluma, phakathi kokunye:
- ngokufinyeleleka kwengxenye yesithathu ezindaweni zokuyidlulisa nokuyigcina;
  - izinqubo zokudliwa komhlaba kanye nezikhathi;
  - izindlela zokuthuthukiswa kwabantu baseNingizimu Afrika ababencishwe amathuba phambilini;
  - izinkambiso zokulamula nokwehlulela; kanye
  - nezimiso nezinkambiso zokulawula intengo.

Umbhalo	Uhlobo	Inombolo Yefeksi	Isigaba Sokuphepha	UMnyango	Inombolo ye-Tanzwana	Usuku ekhishwe ngalo	
IMANUWALI YE-PAIA NE-POPIA	3	7/3/4/2/1	Ayibekwanga ngokwesigaba	I-IRM	NERSA-1532172523-68514	2022/23	Page 19 of 49

c) UNgqongqoshe ushicilele iZimiso Zembali Yophethiloli Wamapayipi mhla zi-4 Ephreli 2008. Lezi Zimiso zikhuluma, phakathi kokunye:

- ngokufinyeleleka kwengxenye yesithathu ezindaweni zokuwugcina;
- ukubeka izintela zophethiloli wamapayipi kanye nokwamukelwa kwezindawo zokuwulayisha nokuwugcina;
- izinqubo zokudliwa komhlaba kanye nezikhathi;
- izindlela zokuthuthukisa abantu baseNingizimu Afrika ababencishwe amathuba phambilini; kanye
- nezinkambiso zokulamula nokwehlulela.

1.5.1.6 I-NERSA ithola imali yayo, phakathi kokunye, ngokubeka izinteliso ezimbonini ezilawulwayo kulandela inqubo emisiwe esobala. Mayelana nalokhu, le Mithetho elandelayo ilawula ukukhokhiswa kwalezi zinteliso:

- UMthetho Wezinteliso Zokulawula Igesi wonyaka we-2002 (uMthetho wama-75 wonyaka we-2002);
- UMthetho Wezinteliso Zophethiloli Wamapayipi wonyaka we-2004 (uMthetho wama-28 wonyaka we-2004);
- UMthetho Kagesi wonyaka we-1987 (uMthetho wama-41 wonyaka we-1987), isahluko sesi-5B.

1.5.1.7 Ngaphandle kwale mithetho eshiwo ngenhla eqondene nembali egcizelela igunya le-NERSA kanye nokufakwa kwezinteliso, le mithetho elandelayo yokusiza neyisisekelo iphinde futhi isebenze emsebenzini we-NERSA:

- UMthetho Wokuphathwa Kwezimali Zikahulumeni wonyaka we-1999 (uMthetho woku-1 wonyaka we-1999) (i-PFMA), ocacisa ngokubalwa kwezimali ze-NERSA njengeSahluko sesi-3A soHlaka Lukahulumeni.
- UMthetho Wokukhuthaza Ukufinyeleleka Kolwazi wonyaka we-2000 (uMthetho wesi-2 wonyaka we-2000)
- UMthetho Wokukhuthaza Ubulungiswa Bokuphatha wonyaka we-2000 (uMthetho wesi-3 wonyaka we-2000) (i-PAJA), onquma isenzo sokuphatha esilungile se-NERSA

Umbhalo	Uhlobo	Inombolo Yefeksi	Isigaba Sokuphepha	UMnyango	Inombolo ye-Tanzwana	Usuku ekhishwe ngalo	
IMANUWALI YE-PAIA NE-POPIA	3	7/3/4/2/1	Ayibekwanga ngokwesigaba	I-IRM	NERSA-1532172523-68514	2022/23	Page 20 of 49

- UMthetho Wokuvikelwa Kolwazi Lobuqu wonyaka we-2013 (uMthetho wesi-4 wonyaka we-2013), onquma indlela i-NERSA okufanele iphathe ngayo ulwazi lobuqu.
- Nayo yonke eminye imithetho esebenzayo yaseRiphabhulikhi yaseNingizimu Afrika.

### 1.5.2 IZINQUBOMGOMO EZIFANELE

Ukugunyazwa kwe-NERSA kuphinde kususelwe kuzinqubomgomo nakuzimiso ezishicilelwe zikahulumeni ezakhiwe nguNgqongqoshe ngokoMthetho Wokulawulwa Kogesi, uMthetho Wegesi kanye noMthetho Kaphethiloli Wamapayipi. Njengoba kuchaziwe kule mithetho, i-NERSA ifanele yenze izinqumo ezihambisana nenqubomgomo kahulumeni eshicilelwe. Ngakho, izinqubomgomo ezifanele ezisebenzayo zinjengoba zilandela:

- UMthetho waseNingizimu Afrika Odingidwayo Ngenqubomgomo Yezamandla wonyaka we-1998
- Inqubomgomo Yokubeka Intengo Kagesi (i-EPP) Yemboni YaseNingizimu Afrika Yokuphakela Ugesi
- INqubomgomo Kagesi Oyisisekelo Wamahhala
- UMthetho waseNingizimu Afrika Odingidwayo Ngenqubomgomo Yezamandla Avuselelekayo wonyaka we-2003
- UHlelo Olukhulu Lokuphepha Kwamandla: Amandla Anguketshezi lashicilelwa uMnyango Wezamandla ngonyaka we-1998 nangonyaka we-2007.
- UHlelo Lukazwelonke Lentuthuko
- UHlelo Lwenqubomgomo Yezimboni Lokuzokwenziwa (i-IPAP)
- UHlelo Lwemidwebo Edidiyelwe (i-IRP) lonyaka we-2019

Umbhalo	Uhlobo	Inombolo Yefeksi	Isigaba Sokuphepha	UMnyango	Inombolo ye-Tanzwana	Usuku ekhishwe ngalo	
IMANUWALI YE-PAIA NE-POPIA	3	7/3/4/2/1	Ayibekwanga ngokwesigaba	I-IRM	NERSA-1532172523-68514	2022/23	Page 21 of 49

## ISIQHEPHU SESI-2

### 2 IMINININGWANE YOKUXHUMANA NABAGCINILWAZI

#### 1. UMgcinilwazi

Isikhulu Esingumphathi Omkhulu woMlawuli Kazwelonke Wezamandla  
WeseNingizimu Afrika (i-NERSA)  
Ucingo: +27 12 401 4620

#### 2. USekela-Mgcinilwazi

UMphathi Wolwazi woMlawuli Kazwelonke Wezamandla  
WaseNingizimu Afrika (i-NERSA)  
I-imeyili: paia@nersa.org.za  
Ucingo: +27 12 401 4600/4723

#### 3. Ikheli Lendawo

Kulawula House  
526 Madiba Street  
Arcadia  
0083  
Pretoria  
South Africa

#### 4. Ikheli Leposi

PO Box 40343  
Arcadia  
0007  
Pretoria  
South Africa

#### 5. Inombolo Yefeksi

+27 12 401 4700

Umbhalo	Uhlobo	Inombolo Yefeksi	Isigaba Sokuphepha	UMnyango	Inombolo ye-Tanzwana	Usuku ekhishwe ngalo	Page 22 of 49
IMANUWALI YE-PAIA NE-POPIA	3	7/3/4/2/1	Ayibekwanga ngokwesigaba	I-IRM	NERSA-1532172523-68514	2022/23	

## ISIQHEPHU SESI-3

### UMHLAMHLANDLELA NGOKUTHI ISETSHENZISWA KANJANI IMANUWALI

UMlawuli Wolwazi, ngokwesahluko se-10(1) se-PAIA, njengoba sichitshiyelwe, sibuyekeza uMhlahlandlela we-PAIA, njengoba wakhiwa okokuqala yiKhomishana YaseNingizimu Afrika Yamalungelo EsiNtu (i-SAHRRC). Inhloso yalo Mhlahlandlela ukuhlinzeka ngolwazi oludingwa yinoma yimuphi umuntu ofisa ukusebenzisa nanoma yiliphi ilungelo elihlongozwe kwi-PAIA kanye ne-POPIA, ngenkathi inhloso yale Manuwali kuwukusiza abantu ngabodwana abafisa ukufinyeleleka olwazini olugcinwe yi-NERSA ngendlela eyimpumelelo nengcono. Umhlahlandlela wokuthi isetshenziswa kanjani i-PAIA uyatholakala ehhovisi loMlawuli Wolwazi.

Nanoma iyiphi imibuzo emayelana nalokhu ifanele ibhekiswe ku:-

The Information Regulator (South Africa)  
PO Box 31533  
Braamfontein  
Johannesburg  
2017

Inombolo yocingo: +27 10 023 5207

I-imeyili: [infoereg@justice.gov.za](mailto:infoereg@justice.gov.za)

Iwebhusayithi: [www.infoeregulator.org.za](http://www.infoeregulator.org.za)

Umbhalo	Uhlobo	Inombolo Yefeksi	Isigaba Sokuphepha	UMnyango	Inombolo ye-Tanzwana	Usuku ekhishwe ngalo	Page 23 of 49
IMANUWALI YE-PAIA NE-POPIA	3	7/3/4/2/1	Ayibekwanga ngokwesigaba	I-IRM	NERSA-1532172523-68514	2022/23	

## ISIQHEPHU SESI-4

### 4. UKUFINYELELEKA KUMAREKHODI

**Isinyathelo esilandelayo sifanele sibhekwe ngaphambi kokuhambisa isicelo**

**Isinyathelo soku-1: Ingabe ulwazi oluceliwe lukhona ngalolo hlobo lwerekhodi?**

- Sicela wazi ukuthi i-PAIA isebenza kuphela kumarekhodi akhona ngesikhathi sokuthola isicelo.
- I-PAIA ayiphofi muntu ukuthi akhe irekhodi elingakabi khona ngesikhathi isicelo senziwa. Isibonelo, i-PAIA ngeke isetshenziselwe ukuthola izizathu zesinqumo esithathwe yi-NERSA uma lezo zizathu zingarekhodiwe.
- Uma unganaso isiqiniseko sokuthi irekhodi likhona yini, sicela ukusho lokho kwi-NERSA efomini lesicelo elifanele.
- Esimweni samarekhodi asevele akwiziNgodlamagugu Zikazwelonke ZaseNingizimu Afrika, amarekhodi azokwenziwa atholakale ngokuhlonipha imithetho esetshenziswayo ekucutshungulweni kolwazi olunjengalolu:
  - UMthetho Wokukhuthaza Ukufinyeleleka Kolwazi wonyaka we-2000 (uMthetho wesi-2 wonyaka we-2000)
  - UMthetho Wokuvikelwa Kolwazi Lobuqu wonyaka we-2013 (uMthetho wama-84 wonyaka we-1982)
  - UMthetho Kazwelonke Wezingodlamagugu Nosizo Lamarekhodi waseNingizimu Afrika wonyaka we-1996 (uMthetho wama-43 wonyaka we-1996).

#### 4.1 Ukudalula Ngokuzenzakalelayo

Ulwazi ngezihloko ezilandelayo lutholakala ngaphandle kokufaka isicelo esisemthethweni, njengoba kumisiwe kwi-PAIA:<sup>6</sup>

4.1.1 Okushicilelwe kwe-NERSA kanye nemibiko yonyaka

4.1.2 Ulwazi olujwayelekile oluphatelene ne-NERSA kanye nolwazi olumayelana nezinsizakalo ezinikezwayo

<sup>6</sup> ISahluko se-15 soMthetho Wokufinyeleleka Kolwazi wesi-2 wonyaka we-2000.

Umbhalo	Uhlobo	Inombolo Yefeksi	Isigaba Sokuphepha	UMnyango	Inombolo ye-Tanzwana	Usuku ekhishwe ngalo	
IMANUWALI YE-PAIA NE-POPIA	3	7/3/4/2/1	Ayibekwanga ngokwesigaba	I-IRM	NERSA-1532172523-68514	2022/23	Page 24 of 49



4.1.3 Ulwazi olutholakala kuwebhusayithi ye-NERSA kwi-[www.nersa.org.za](http://www.nersa.org.za), olubandakanya:

4.1.3.1 umthetho ophathelene ne-NERSA;

4.1.3.2 izinqumo ezithathwe uMlawuli Wezamandla;

4.1.3.3 izizathu zezinqumo ezithathwe uMlawuli Wezamandla; kanye

4.1.3.4 nemibhalo yamathenda atholakalayo kanye nemibhalo yokubhida.

**Qaphela:** Kungashaywa ndiva okungenhla, ukubekelwa isikhathi ngenhloso yokubuka imibhalo kusazofanele kwenziwe kumgcinilwazi noma kusekela wakhe, yize isicelo esisemthethweni singadingeki ukuba sifakwe.

## 4.2 Ulwazi olufanele lucelwe ngokusemthethweni

I-NERSA igcine ulwazi oluphathelene nalezi zihloko ezilandelayo, okufanele lucelwe ngokusemthethweni ngokoMthetho. Ukufakwa kwanoma isiphi izihloko akufanele kuthathwe njengenkomba yokuthi amarekhodi angena ngaphansi kwalezo zihloko kanye/noma kwalezo zigaba azokwenziwa ukuba atholakale ngokoMthetho. Ikakhulukazi, izizathu ezithile zokwenqaba, njengoba zichaziwe eMthethweni, zingasetshenziswa esicelweni samarekhodi anjengalawa. Phakathi kokunye, amarekhodi athathwa njengayimfihlo ngengxenye yesithathu azodinga imvume evela kwingxenye yesithathu ethintekayo, ukwengeza kwizidingo ezivamile, ngaphambi kokuba i-NERSA icabangele ukufinyeleleka.<sup>78</sup>

Lokhu okulandelayo yizigaba zolwazi isicelo ezisemthethweni esingenzelwa zona ku-NERSA.

### 4.2.1 Ezezimali Nokuphatha

4.2.1.1 Amaminithi emihlangano yoMlawuli Wezamandla (izingxenye ezingenabumfihlo)

4.2.1.2 Amaminithi emihlangano yamakomijana

4.2.1.3 Amaminithi emihlangano yabasebenzi kanye/noma emihlangano yabaphathi

4.2.1.4 Ukubala amarekhodi, izincwadi kanye nemibhalo

4.2.1.5 Amarekhodi esikhashana kanye nawonyaka ezezimali

4.2.1.6 Imininingwane yabacwaningimabhuku

<sup>7</sup> UMthetho Wokukhuthaza Ukufinyeleleka Kolwazi wesi-2 wonyaka we-2000

<sup>8</sup> UMthetho Wokukhuthaza Ukufinyeleleka Kolwazi wesi-2 wonyaka we-2000

Umbhalo	Uhlobo	Inombolo Yefeksi	Isigaba Sokuphepha	UMnyango	Inombolo ye-Tanzwana	Usuku ekhishwe ngalo	Page 25 of 49
IMANUWALI YE-PAIA NE-POPIA	3	7/3/4/2/1	Ayibekwanga ngokwesigaba	I-IRM	NERSA-1532172523-68514	2022/23	

4.2.1.7 Imibiko yocwaningomabhuku lwangaphandle

4.2.1.8 Izivumelwano Zamazinga Osizo

4.2.1.9 Izivumelwano zokuqashiselana nabaqashi kanye nabasebenzisi bomhlaba noma bempahla

4.2.1.10 Inqubomgomo Yokuphathwa Kweketanga Lokuthenga

4.2.1.11 Amaminithi nokunikezwa kwamaphuzu kweKomidi Lokuhlolwa Kwamabhidi

4.2.1.12 Amaminithi Okwahlulelwa Kwamabhidi

4.2.1.13 Imibhalo Yamabhidi

4.2.1.14 Iziliphu zokuhola zabasebenzi

#### **4.2.2 Ezabasebenzi**

4.2.2.1 Ukwakheka kwenhlangano

4.2.2.2 Uhlelo Lokulingana Emsebenzini

4.2.2.3 Inqubomgomo Yezabasebenzi

4.2.2.4 Izivumelwano nezinyunyana

4.2.2.5 Amarekhodi okuqondiswa kwezigwegwe kanye nemibhalo ephathelene nezinqubo zokuqondiswa kwezigwegwe

4.2.2.6 Amafayela eminingwane yabasebenzi ngqo

#### **4.2.3 Eminye imibhalo**

4.2.3.1 Izimvume ezijwayelekile nezimvume

4.2.3.2 Izizathu zezinqumo zoMlawuli Wezamadla (izingxenye ezingeyona imfihlo)

4.2.3.3 Eminye imibhalo ehlobene nezicelo/esekela izicelo zezimvume

4.2.3.4 Izintela kanye neminye imibhalo ehlobene nazo

#### **4.3 Inkambiso yokwenza isicelo**

4.3.1 Umfakisicelo ufanele athobele okulandelayo ngaphambi kokuba ukucutshungulwa kutholwe isicelo sakhe solwazi:

4.3.1.1 Umfakisicelo ufanele ahloniphe zonke izidingo zenkambiso eziseMthethweni mayelana nesicelo sokufinyeleleka kwirekhodi.

Umbhalo	Uhlobo	Inombolo Yefeksi	Isigaba Sokuphepha	UMnyango	Inombolo ye-Tanzwana	Usuku ekhishwe ngalo	Page 26 of 49
IMANUWALI YE-PAIA NE-POPIA	3	7/3/4/2/1	Ayibekwanga ngokwesigaba	I-IRM	NERSA-1532172523-68514	2022/23	

- 4.3.1.2 Ukufinyeleleka kulelo rekhodi kungaliwa nganoma ngasiphi isizathu esishiwo eMthethweni.<sup>9</sup>
- 4.3.1.3 Umfakisisicelo ufanele asebenzise **iFomu A**, elinanyithiselwe **kwiSheduli yesi-2** kule Manuwali, ukucela ulwazi.
- 4.3.2 Uma isicelo esiphelele samukelwe, isinqumo sizothathwa kungakapheli isikhathi esimisiwe sezinsuku ezingama-30 zekhalenda. Kodwa-ke, lesi sikhathi singelulwa uSekela-MgciniLwazi ngezinye izinsuku ezingama-30 ezimweni ezithile.
- 4.3.3 Uma ukufinyeleleka kumarekhodi e-NERSA kuvunyiwe, umfakisisicelo uzokwaziswa futhi kudingeke ukuba akhokhe izimali ezimisiwe zokufinyeleleka, njengoba zichazwe kwiSheduli yoku-1, ngaphambi kokuba ukufinyeleleka kunikezwe.
- 4.3.4 Uma umfakisisicelo ecela ukufinyeleleka ngohlobo oluthile, ngakho-ke umfakisisicelo ufanele athole ukufinyeleleka ngendlela ayicelile, ngaphandle uma ukwenza kanjalo kuzothikameza ngokungafanele ukusebenza kwebhizinisi le-NERSA noma kulimaze irekhodi noma kwephule ilungelo lomunye umuntu. Uma, ukwenzela izizathu ezibonakalayo, ukufinyeleleka kungeke kwanikezwa ngendlela eceliwe, kodwa kunganikezwa ngenye indlela, ngakho-ke imali ekhokhwayo iyobalwa ngokuhambisana nendlela eceliwe ekuqaleni.<sup>10</sup>
- 4.3.5 Ngaphandle uma isicelo senziwa umuntu ozicelela ulwazi oluqondene naye qobo noma umuthi othi udedelwe, imali yesicelo engama-R100.00 ifanele ikhokhwe kwi-akhawunti yasebhangwe ye-NERSA futhi ubufakazi balokho bufanele busiwe kuSekela-MgciniLwazi. Ukuze athole ukudedelwa kokukhokha izimali okunikezwe nguNgqongqoshe ngokwesahluko sama-22(8) se-PAIA, iNgxenye E yeFomu A ifanele igcwaliswe.
- 4.3.6 Uma ukwengezwa kwimpendulo ebhaliwe yesicelo serekhodi, umfakisisicelo efuna ukwaziswa ngesinqumo nganoma ngabe kungayiphi indlela, lokhu kufanele kukhonjiswe.<sup>11</sup>
- 4.3.7 Uma umfakisisicelo ecela ulwazi elucelela omunye umuntu, isikhundla sokuthi isicelo usenza engubani sifanele sishiwo.<sup>12</sup>

<sup>9</sup> UMthetho Wokukhuthaza Ukufinyeleleka Kolwazi wesi-2 wonyaka we-2000

<sup>10</sup> ISahluko se-18(3) nesi-(4) soMthetho Wokukhuthaza Ukufinyeleleka Kolwazi wesi-2 wonyaka we-2000. A

<sup>11</sup> ISahluko se-18(2)(e) soMthetho Wokufinyeleleka Kolwazi wesi-2 wonyaka we-2000.

<sup>12</sup> ISahluko se-18(2)(f) soMthetho Wokufinyeleleka Kolwazi wesi-2 wonyaka we-2000.

Umbhalo	Uhlobo	Inombolo Yefeksi	Isigaba Sokuphepha	UMnyango	Inombolo ye-Tanzwana	Usuku ekhishwe ngalo	
IMANUWALI YE-PAIA NE-POPIA	3	7/3/4/2/1	Ayibekwanga ngokwesigaba	I-IRM	NERSA-1532172523-68514	2022/23	Page 27 of 49

4.3.8 Uma umfakisicelo engakwazi ukufunda noma ukubhala noma enokukhubazeka, angasenza isicelo serekhodi ngomlomo. Umgcinilwazi ngakho-ke ufanele agcwalise ifomu esikhundleni saloyo Mfakisicelo futhi amhlinzeke ngekhophi.<sup>13</sup>

#### 4.4 Izixazululo ezitholakalayo kuBafakizicelo ngokunqaba kwe-NERSA ukuhlinzeka ngolwazi

UMthetho uhlinzeka ngenqubo yokukhalaza kwangaphakathi nokwangaphandle uma kufanele i-NERSA yenqabe ngokuhlinzeka ulwazi kuMfakisicelo.

##### (i) Ukukhalaza Kwangaphakathi

Nanoma yimuphi uMfakisicelo onesikhalo angagcwalisa **iFomu B**, elinanyathiselwe **kwiSheduli yesi-3** kule manuwali, futhi akhalaze ngaphakathi ekhalazela isinqumo esithathwe uMgcinilwazi Wezokulawulwa Kwezamandla. Umphumela wesikhalazo uzokwaziswa uMfakisicelo kungapheli isikhathi esifanele.

##### (ii) Ukukhalaza Kwangaphakathi

UMfakisicelo onganelisekile ngomphumela wokukhalaza kwangaphakathi kanye nokwenqatshwa kokudalulwa kolwazi, kungapheli izinsuku ezingama-30 zokwaziswa ngesinqumo, angenza isicelo eNkantolo ePhakeme ukuze athole isisombululo.

Ngokufanayo, ingxenye yesithathu enganelisekile ngesinqumo soMgcinilwazi izokwazisa ngokuvunywa kwesicelo solwazi, kungakapheli izinsuku ezingama-30 zokwaziswa ngesikhalazo, ingafaka isicelo eNkantolo ePhakeme sokuba ixazululelwe.

<sup>13</sup> ISahluko se-18(3) soMthetho Wokufinyeleleka Kolwazi wesi-2 wonyaka we-2000.

Umbhalo	Uhlobo	Inombolo Yefeksi	Isigaba Sokuphepha	UMnyango	Inombolo ye-Tanzwana	Usuku ekhishwe ngalo	Page 28 of 49
IMANUWALI YE-PAIA NE-POPIA	3	7/3/4/2/1	Ayibekwanga ngokwesigaba	I-IRM	NERSA-1532172523-68514	2022/23	

## ISIQHEPHU SESI-5

### 5. IZINSIZAKALO EZITHOLAKALAYO

#### 5.1 UHLOBO LEZINSIZAKALO

I-NERSA ihlinzeka ngalezi zinsizakalo ezilandelayo ngokwegunya layo lomthetho:

##### 5.1.1 Ugesi

- 5.1.1.1 Ukukhishwa kwezimvume zokuphehlwa, ukwabiwa, ukusabalalisa, ukuhweba; kanye nokungena nokuphuma kwezimpahla ezweni
- 5.1.1.2 Ukukhishwa kwezimvume zabahwebi
- 5.1.1.3 Ukubekwa kwentela
- 5.1.1.4 Ukwakhiwa kwezindlela zemali yentela
- 5.1.1.5 Ukuhlolwa kanye nokuvunywa kwezicelo zezimvume zentela
- 5.1.1.6 Ukwakhiwa kwezinhloko zentengo
- 5.1.1.7 Ukuhlelela izwe ukwenyuka kwesidingo sikagesi esikhathini esizayo
- 5.1.1.8 Ukukhuthaza ezinye izindlela zokuphehla ugesi
- 5.1.1.9 Ukukhuthaza ukuphathwa kangcono eceleni nakangcono kwamandla
- 5.1.1.10 Ukwakha uhloko lokulawula ukwethulwa kweZinhleloXhumano Zabasabalalisi Bogesi Kwizifunda
- 5.1.1.11 Ukulamula okuphakathi kwabaphehli, abadlulisi, abasabalalisi, amakhasimende noma abasebenzisi
- 5.1.1.12 Ukwenza uphenyo ngokwenziwa abanezimvume
- 5.1.1.13 Ukwenza nanoma yikuphi okunye okuvelayo okuphathelene nakho.

##### 5.1.2 Amapayipi Kaphethiloli

- 5.1.2.1 Ukukhishwa kwezimvume zokwakhiwa kanye nokusebenza kwezikhungo zamapayipi kaphethiloli
- 5.1.2.2 Ukuqoqa ulwazi ngamapayipi kaphethiloli kanye nezindawo zokuwugcina nokufaka
- 5.1.2.3 Ukuqinisekisa okuhlelekile kanye nokuphepha kokuphakela kwemboni kaphethiloli wamapayipi
- 5.1.2.4 Ukuqapha ukuhlonishwa koMthetho Wamapayipi Kaphethiloli kanye nezimiso
- 5.1.2.5 Ukuphoqelela ukufinyeleleka kwengxenye yesithathu kuzikhungo zikaphethiloli

Umbhalo	Uhlobo	Inombolo Yefeksi	Isigaba Sokuphepha	UMnyango	Inombolo ye-Tanzwana	Usuku ekhishwe ngalo	Page 29 of 49
IMANUWALI YE-PAIA NE-POPIA	3	7/3/4/2/1	Ayibekwanga ngokwesigaba	I-IRM	NERSA-1532172523-68514	2022/23	

- 5.1.2.6 Ukwakhiwa kwezindlela zentela yamapayipi kaphethiloli kanye nezindawo zokuwugcina nokuwulayisha
- 5.1.2.7 Ukuhlola nokubeka izintela zikaphethiloli wamapayipi kanye nezindawo zokuwugcina nokuwulayisha
- 5.1.2.8 Ukuqoqa imininingo ethile ngemboni.

### **5.1.3 Igesi Yamapayipi**

- 5.1.3.1 Ukukhipha izimvume zokwakhiwa, ukuguqulwa kanye nokusebenza kwezikhungo zegesi yamapayipi kanye nokuhweba ngayo
- 5.1.3.2 Ukuqoqa ulwazi ngakho konke okwenziwayo kwegesi yamapayipi ukuze kuhlelwe ngokwanele, kanye nokuphepha kokuyiphakela
- 5.1.3.3 Ukuqashwa kanye nokuvunywa kwezindlela zentela yokugcinwa nokudluliswa kwegesi yamapayipi
- 5.1.3.4 Ukuphoqelela izinqubomgomo zokufinyeleleka kwengxenye yesithathu
- 5.1.3.5 Ukufakwa kwamamitha eNingizimu Afrika.

## **5.2 UKUTHOLA KANJANI UKUFINYELELEKA KULEZI ZINSIZAKALO?**

I-NERSA izibophezele ekuhlinzekeni izinsizakalo ngokuhambelana nesitatimende senhlosombono yayo, esifundeka kanjena:

*Ukulawula imboni yezamandla ngokuhambelana nemithetho kanye nezinqubomgomo zikahulumeni, amazinga nezinqubo ezinhle zamazwe ngamazwe ekusekeleni ukusimama nentuthuko ehlelekile.*

- 5.2.1 Izinsizakalo zingatholwa ngabangahle babe nezimvume (ukwenzela inhloso yokuthola imvume yanoma ikuphi okwenziwayo okulawulwa yi-NERSA), zanoma iliphi elinye ilungu lomphakathi kanye nokusetshenziswa nabo:
  - 5.2.1.1 ngokufaka isicelo sanoma ikuphi okwenziwayo okulawulwa yi-NERSA;
  - 5.2.1.2 ngokuba yingxenye ekulaleni komphakathi kanye nokufakwa kwemibono lapho izaziso ezinjengalezi zenziwa; kanye
  - 5.2.1.3 nangokufaka isikhalazo kanye nokucela ukulanyulwa okuvela e-NERSA.
- 5.2.2 Olunye ulwazi nge-NERSA kanye nezinsizakalo ezitholakalayo zingahlolwa ngendlela elandelayo:

Umbhalo	Uhlobo	Inombolo Yefeksi	Isigaba Sokuphepha	UMnyango	Inombolo ye-Tanzwana	Usuku ekhishwe ngalo	
IMANUWALI YE-PAIA NE-POPIA	3	7/3/4/2/1	Ayibekwanga ngokwesigaba	I-IRM	NERSA-1532172523-68514	2022/23	Page 30 of 49

5.2.2.1 Ukuvakashela iwebusayithi ye-NERSA ku:-[www.nersa.org.za](http://www.nersa.org.za);

5.2.2.2 Ukuvakashela ekhelini le-NERSA elithi: Kulawula House, 526 Madiba Street, Arcadia, Pretoria; noma

5.2.2.3 Ukushayela isikhungo Sokuxhumana se-NERSA ku:-+27 12 401 4600.

### 5.2.3 IZIKHALAZO EZIYA KUMLAWULI WOLWAZI

5.2.3.1 Umfakisicelo noma ingxenye yesithathu ingafaka kuphela isikhalazo kuMlawuli Wolwazi ngokuhambisana nesiQephu soku-1A se-PAIA ngemuva kokuba lowo mfakisicelo noma leyo ngxenye yesithathu isidlule kuyo yonke inkambiso yangaphakathi yokukhalaza iphikisa isinqumo soMgcinilwazi.

5.2.3.2 Isikhalazo esiya kuMlawuli Wolwazi sifanele sibe esibhalwe phansi, futhi ifomu lokukhalaza lifanele ligcwaliswe, ngesandla noma ku-inthanethi. Ifomu lokukhalaza lingadanilodwa kusizindalwazi soMlawuli Wolwazi kuleli kheli: [www.inforegulator.org.za](http://www.inforegulator.org.za).

Umbhalo	Uhlobo	Inombolo Yefeksi	Isigaba Sokuphepha	UMnyango	Inombolo ye-Tanzwana	Usuku ekhishwe ngalo	Page 31 of 49
IMANUWALI YE-PAIA NE-POPIA	3	7/3/4/2/1	Ayibekwanga ngokwesigaba	I-IRM	NERSA-1532172523-68514	2022/23	

## ISIQHEPHU SESI-6

### 6. ISIQHEPHU SESI-6: AMALUNGISELELO AVUMELA UKUBAMBA IQHAZA KOMPHAKATHI EKUFEZWE NI KOKUGUNYAZWA KWE-NERSA

UMthetho Kazwelonke Womlawuli Wezamandla uhlinzekela ukubamba iqhaza komphakathi ngokusho ukuthi zonke izinqumo zoMlawuli Wezamandla zifanele zibhalwe phansi futhi, okubaluleke kakhulu, izinqumo zifanele zithathwe ngokusebenzisa inqubo engenzeleli ngokwenza, lapho abantu abathintekayo bethola ithuba lokufaka imibono futhi bethula amaqiniso kanye nobufakazi kuMlawuli Wezamandla.<sup>14</sup>

Ukuhlonipha umbandela ongenhla, i-NERSA isebenzisa izinqubo ezimbili ngokoMthetho Wokukhuthaza Ubulungiswa Bokuphatha wonyaka we-2000 (uMthetho wesi-2 wonyaka we-2000) (i-'PAJA'). Lezi zinqubo yilezi:

- (i) imihlangano yomphakathi; kanye
- (ii) nenkambiso yokwazisa nokubeka imibono.

#### 6.1 Imihlangano Yomphakathi

Emidantini nasezicelweni zezimvume ezithinta umphakathi, i-NERSA ibamba imihlangano yomphakathi. I-NERSA ibeka isikhangiso somhlangano womphakathi esichaza ulimi, isikhathi kanye nendawo futhi icele nanoma imuphi umuntu ofisa ukuba enze isethulo somlomo emhlanganweni womphakathi ukuba akuveze lokhu kuSihlalo Wekomijana lokubamba imihlangano yomphakathi. Imithetho yemihlangano yomphakathi iyatholakala emahhovisi e-NERSA ngokucelwa.

#### 6.2 Inkambiso Yokwazisa Nokubeka Imibono

Lapho i-NERSA inomqondo wokuthi isicelo sinomthelela ongemuhle elungelweni lomphakathi, isaziso sizonikezwa umfakisicelo, futhi amalungu omphakathi azobe esecelwa ukuba ahambise imibono yawo kuMlawuli Wezamandla. Uma uMlamuli Wezamandla enomqondo wokuthi, ngokwemibono ebekiwe, umhlangano womphakathi ufanele ubanjwe ukuze kulalelwe ubufakazi bomlomo, le nkambiso izobe isiphendulelwa kulowo mhlangano womphakathi futhi ngokuqhubeka kwesikhathi izolandelwa.

<sup>14</sup> Isahluko se-10(1)(d) soMthetho wama-40 wonyaka we- 2004

Umbhalo	Uhlobo	Inombolo Yefeksi	Isigaba Sokuphepha	UMnyango	Inombolo ye-Tanzwana	Usuku ekhishwe ngalo	Page 32 of 49
IMANUWALI YE-PAIA NE-POPIA	3	7/3/4/2/1	Ayibekwanga ngokwesigaba	I-IRM	NERSA-1532172523-68514	2022/23	



## ISIQHEPHU SESI-7

### 7. ULWAZI OLUMAYELANA NOKUVIKELWA KOLWAZI LOBUQU NJENGOBA KULINDELWE KWISAHLUKO SE-14(1)(c) SE-PAIA

#### 7.1 I-NERSA icubungula ulwazi lobuqu lesihloko somniningo esihlonzwe kwisigaba sesi-4.2 ukwenzela izinhloso ezilandelayo:

Izihloko Zomniningo	Izigaba Zolwazi Lobuqu
Abasebenzi nabafake izicelo zomsebenzi	<ul style="list-style-type: none"> <li>- Inombolo kamazisi namagama, isimo somshado ukwenzela ukuhlololwa ubugebengu kanye nokuphathwa kwempesheni</li> <li>- Ukuqinisekiswa kweziqu nocwaningomabhuku</li> <li>- Ulwazi lwezikweleti nomlando wokukhokha</li> <li>- Ukuqinisekiswa kwabasebenzi abenza umsebenzi noHulumeni</li> <li>- Imidanti ejwayelekile ephathelene nabasebenzi (imihlomulo ejwayelekile, impesheni, usizo lokwelashwa, ukuqondiswa kwezigwegwe, ukuphathwa kwamalivu, ukulawulwa kwensebenzo, ukuqeqeshwa, nokuqinisekiswa kokuphepha</li> <li>- Ukuqinisekiswa nabaqashi bangaphambilini</li> <li>- Ulwazi lwe-akhawunti yomuntu siqu lwasebhange</li> <li>- Nanoma yiluphi olunye ulwazi oludingekayo ngemfanelo oluhlobene nomsebenzi noma nobudlelwano obungenzeka bokuqashwa</li> </ul>
Ababhidayo, abathengisi, abaphakeli kanye nabahlinzeki bezinsizakalo	<ul style="list-style-type: none"> <li>- Umazisi kanye/noma ulwazi lwenkampani nolwazi lwabaqondisi</li> <li>- Amagama abantu okuxhunanwa nabo</li> <li>- Ikheli lendawo neleposi; imininingwane yokuxhumana (i(zi)nombolo (z)okuxhumana), inombolo yefeksi, ikheli le-imeyili)</li> <li>- Inombolo yokubhaliswa; ezezimali, ezohwebo</li> <li>- Ulwazi lwesayensi noma lobuchwepheshe</li> <li>- Izimfihlo zohwebo, ulwazi lwasebhange kanye nezezimali</li> <li>- Ulwazi mayelana nemikhiqizo noma nezinsizakalo</li> </ul>

Umbhalo	Uhlobo	Inombolo Yefeksi	Isigaba Sokuphepha	UMnyango	Inombolo ye-Tanzwana	Usuku ekhishwe ngalo	Page 33 of 49
IMANUWALI YE-PAIA NE-POPIA	3	7/3/4/2/1	Ayibekwanga ngokwesigaba	I-IRM	NERSA-1532172523-68514	2022/23	

Izihloko Zomnininingo	Izigaba Zolwazi Lobuqu
	<ul style="list-style-type: none"> <li>- Ulwazi oluhlobene nesimo sentela kanye nesimo sokuhlonyiswa okwenebe kwezomnotho kwabantu abamnyama</li> <li>- Ukuqinisekisa ulwazi nokuxhumana namareferensi kanye nokunye ukuhlolwa okumisiwe</li> <li>- Ukuhlonishwa kwemithetho yokulawula yenhlangano nezinye izibopho</li> <li>- Ama-invoyisi abaphakeli</li> <li>- Olunye ulwazi olungacacisiwe kodwa oludingekayo ngemfanelo ukuze lucutshungulwe ukuze kwenziwe imisebenzi</li> </ul>
Abantu abenza isicelo ngokwe-PAIA, ngokwe-POPIA	<ul style="list-style-type: none"> <li>- Ukuhlonza kanye/noma imininingwane yenkampani kanye nemininingwane yabaqondisi, nabaninimasheya</li> <li>- Amagama abantu okuxhunyanwa nabo</li> <li>- Amakheli ezindawo naweposi, imininingwane yokuxhumana (inombolo yokuxhumana), inombolo yefeksi, ikheli le-imeyili)</li> <li>- Inombolo yokubhaliswa; ezezimali, imininingwane yezohwebo neyentela</li> <li>- Ulwazi lwesayensi noma lobuchwepheshe kanye nezimfihlo zohwebo</li> <li>- Ulwazi lwasebhangwe nezezimali, ulwazi mayelana nemikhiqizo noma izinsizakalo</li> <li>- Ukuhlonyiswa Okwenebe Kwezomnotho Kwabantu Abamnyama kanye nolwazi lomqulu</li> <li>- Olunye ulwazi olungacacisiwe kodwa oludingekayo ngemfanelo ukuze lucutshungulwe ngokomthetho ohlobene nezamandla</li> </ul>

**7.2 Abemukelayo noma izigaba zabemukelayo abangahle banikezwe ulwazi lobuqu**

I-NERSA ingahle futhi inikeze ulwazi lobuqu lwezihloko zeminininingo:

- (a) kunoma yimuphi umuntu onelungelo lokuluthola ngokomthetho;
- (b) kunoma yisiphi isiphathimandla esilawulayo noma inkantolo, mayelana nanoma yiluphi udaba noma ingxenye yalo, olungaphansi kwamandla aso;

Umbhalo	Uhlobo	Inombolo Yefeksi	Isigaba Sokuphepha	UMnyango	Inombolo ye-Tanzwana	Usuku ekhishwe ngalo	Page 34 of 49
IMANUWALI YE-PAIA NE-POPIA	3	7/3/4/2/1	Ayibekwanga ngokwesigaba	I-IRM	NERSA-1532172523-68514	2022/23	

- (c) kuzikhungo eziphoqelela ukuthotshelwa komthetho njengoPhiko Lukazwelonke Lwezoshushiso;
- (d) kuMbutho Wezamaphoyisa WaseNingizimu Afrika, ukuze uphenye ngobugebengu; kanye
- (e) nakwizinkantolo, maqondana nanoma yiluphi udaba oluthathelwe ukubuyekezwa kwezomthetho.

### 7.3 Izinyathelo Zokuvikeleka Kolwazi

I-NERSA izobeka izimiso zokuphepha ukuze kuvikelwe ulwazi lobuqu ekubeni lufinyelelwe ngokungekho emthethweni, futhi lezi zindlela ezilandelayo zizosetshenziswa:

- Ukubekwa ngezigaba ezifanele kolwazi kubhalwa phansi, olufana neminingo yabasebenzi luzobekwa ngezigaba 'njengolwazi lobuqu' noma 'ulwazi lobuqu olukhethekile'.
- Imithetho yezokuphepha yokuqapha ukufinyeleleka okungagunyaziwe kolwazi ngokusebenzisa izinyathelo zokuphepha kwamakhompyutha nohlelohumano, njengamaphasiwedi, ukusetshenziswa kwezivimbeli, ukufakwa kwezivikeli zamavayirasi, ukuqinisekisa ukuvikelwa kwedatha kanye nokuhlelwa kabusha kolwazi lobuqu, ukubethela ama-laptop namakhompyutha ngokusebenzisa amaphasiwedi noma izithupha nokuvikela i-*Virtual Private Network* (i-VPN).
- Imithetho yokwazisa abasebenzi noma abanye abantu lapho ulwazi lwabo lobuqu lubekeke engcupheni noma lapho kukhona ukwepulwa kobumfihlo izokwenziwa ibe eyesikhungo.
- Imithetho yokuphepha eqinile yamukelwa ukuze ibeke imikhawulo yokufinyelela kwengxenywe yesithathu ehhovisi, kuhlelohumano lamakhompyutha, kwisistimu, kwisofthiwe yezisetshenziswa, kwidatha noma ezinye insiza.
- Esimweni sokufinyelelwa okungekho emthethweni kwedatha, kokubili isihloko somningo kanye noMlawuli Wolwazi bafanele baziswe ngokushesha nje lapho kunezizathu ezizwakalayo zokukholelwa ukuthi ingxenywe engagunyaziwe ifinyelele noma ithole ulwazi lobuqu ngokungemthetho.

Umbhalo	Uhlobo	Inombolo Yefeksi	Isigaba Sokuphepha	UMnyango	Inombolo ye-Tanzwana	Usuku ekhishwe ngalo	
IMANUWALI YE-PAIA NE-POPIA	3	7/3/4/2/1	Ayibekwanga ngokwesigaba	I-IRM	NERSA-1532172523-68514	2022/23	Page 35 of 49

#### 7.4 Ukugeleza Kolwazi Lobuqu Phakathi Kwengcele

I-POPIA ihlinzeka ngokuthi ulwazi lobuqu lungadluliselwa ngaphandle kwaseRiphabhulikhi yaseNingizimu Afrika kuphela uma:

- izwe elilamukelayo linganikeza umnininingo onjenjalona 'wezinga elanele' lokuvikeleka;  
izwe elilamukelayo linikeze izivikelo ezifanele, futhi kuphela nje uma amalungelo esihloko somnininingo engaphoqelelwa kanye nezixazilulo ezisebenzayo zomthetho wezihloko zomnininingo zitholakala;
- izwe elilamukelayo lisendaweni yokusebenza engaphansi komthetho ohlinzeka ngezinga elanele elifanayo lokuvikelwa kwesihloko somnininingo njengaku-POPIA. Ingxenye yesithathu eyamamukela ulwazi ingaphansi komthetho, imithetho yebhizinisi ebophezelayo noma kwesivumelwano esibophobezelayo, esihlinzeka ngezinga elanele lokuvikeleka; noma
- isihloko somnininingo sivuma ukudluliswa kolwazi lwaso lobuqu.

Umbhalo	Uhlobo	Inombolo Yefeksi	Isigaba Sokuphepha	UMnyango	Inombolo ye-Tanzwana	Usuku ekhishwe ngalo	Page 36 of 49
IMANUWALI YE-PAIA NE-POPIA	3	7/3/4/2/1	Ayibekwanga ngokwesigaba	I-IRM	NERSA-1532172523-68514	2022/23	

## ISIQEPHU SESI-8

### 8. OKUNYE

8.1 Le manuwali izotholakala:

8.1.1 kwiwebhusayithi ye-NERSA ([www.nersa.org.za](http://www.nersa.org.za));

8.1.2 emahhovisi eKhomishani YaseNingizimu Afrika Yamalungelo EsiNtu;

8.1.3 emahhovisi e-NERSA; futhi

8.1.4 nakuyo yonke indawo engcina ngokomthetho imibhalo njengoba ichazwe kwisahluko sesi-6 soMthetho Wezindawo Ezingcina Ngokomthetho Imibhalo (uMthetho wama-54 wonyaka we-1997) ('uMthetho Wezindawo Ezingcina Imibhalo Ngokomthetho')

Lezi zindawo ngokoMthetho Wezindawo Ezingcina Imibhalo Ngokomthetho:<sup>15</sup>

a) IziNsizakalo Zomtapo Wolwazi Wedolobha, e-Bloemfontein;

b) Umtapo Wolwazi Wephalamende, eKapa;

c) INhlangano YaseNatali Yomtapowolwazi, eMgungundlovu;

d) Umtapo Wolwazi WaseNingizimu Afrika, eKapa;

e) Umtapo Wolwazi Wombuso, ePitoli;

f) INgodlamagugu Kazwelonke Yamafilimu, Yamavido Nemisindo, ePitoli (izinhlaka ezithile); kanye

g) Nanoma yimuphi umtapo wolwazi noma isikhungo esimiswe nguNgqongqoshe.

8.2 Le manuwali izofakwa ulwazi olusha njalo eminyakeni emithathu (3) futhi uhlobo oluchitshiyelwe luzohanjiswa eHhovisi loMlawuli Wolwazi.

8.3 Le manuwali izotholakala ngezilimi ezine (4) ezisemthethweni ezikhulunywa eNingizimu Afrika ukuze kuqinisekise ukufinyeleleka okukhulu, okuyilezi:

- IsiNgisi
- IsiBhunu
- ISesotho
- IsiZulu.

<sup>15</sup> wama-54 wonyaka we-1997.

Umbhalo	Uhlobo	Inombolo Yefeksi	Isigaba Sokuphepha	UMnyango	Inombolo ye-Tanzwana	Usuku ekhishwe ngalo	
IMANUWALI YE-PAIA NE-POPIA	3	7/3/4/2/1	Ayibekwanga ngokwesigaba	I-IRM	NERSA-1532172523-68514	2022/23	Page 37 of 49



# AMASHEDULI

- 1. IZIMALI EZIKHOKHWAYO EZIMISIWE**
- 2. IFOMU ELIMISIWE LOKUFINYELELEKA  
KUMAREKHODI [IFOMU A]**
- 3. IFOMU LOKUKHALAZA KWANGAPHAKATHI**

Umbhalo	Uhlobo	Inombolo Yefeksi	Isigaba Sokuphepha	UMnyango	Inombolo ye-Tanzwana	Usuku ekhishwe ngalo	
IMANUWALI YE-PAIA NE-POPIA	3	7/3/4/2/1	Ayibekwanga ngokwesigaba	I-IRM	NERSA-1532172523-68514	2022/23	Page 38 of 49

## ISHEDULI YOKU-1

### IZIMALI MAYELANA NEZINHLAKA ZIKAHULUMENI

Isheduli yezimali ekhokhwayo ezisetshenziswayo ezicelweni zokufinyeleleka ezibhalwe ngezansi.

Inombolo	Incazelo Yezimali Ezikhokhwayo	ama-Randi (ama-R)
1.	Imali yesicelo ekhokhwa yiwo wonke umfakisiselo, ngaphandle kozifakela yena uqobo isicelo	ama-R100.00
2.	Amafothokhopi obukhulu bekhasi bungu-A4	ama-R1.50 ikhasi noma ingxenye yalo
3.	Ikhopi ephrintiwe yobukhulu bekhasi obungu-A4	ama-R1.50 ikhasi noma ingxenye yalo
4.	Ikhopi enguhlobo olufundeka ngekhompyutha ku:- (i) flesh-dravvu (izonikwa ngumfakisiselo) (ii) khompekthi diskhi (i-CD)  Uma inikwe ngumfakisiselo Uma inikwe umfakisiselo	ama-R40.00  ama-R40.00 ama-R60.00
5.	Ukubhalwa phansi kwemifanekiso ebukwayo yokukhulu ubungu-A4 ikhasi ngalinye	Usizo olukhishelwe ngaphandle. Luyoya ngekhotheshini evela kumhlinzeki wosizo
6.	Ikhopi yemifanekiso ebukwayo	ama-R60.00
7.	Ukubhalwa phansi kwemisindo erekhodiwe, ikhasi elinobukhulu obungu-A4 ngalinye	ama-R24.00
8.	Ikhopi yemisindo erekhodiwe eku:- (i) flesh-dravvu (izonikwa ngumfakisiselo)	ama-R40.00

Umbhalo	Uhlobo	Inombolo Yefeksi	Isigaba Sokuphepha	UMnyango	Inombolo ye-Tanzwana	Usuku ekhishwe ngalo	Page 39 of 49
IMANUWALI YE-PAIA NE-POPIA	3	7/3/4/2/1	Ayibekwanga ngokwesigaba	I-IRM	NERSA-1532172523-68514	2022/23	

	(ii) khompekthi diskhi - Uma inikwe ngumfakisicelo - Uma inikwe umfakisicelo	ama-R40.00 ama-R60.00
9.	Ukucinga nokulungisa irekhodi ukuba lidalulwe ihora ngalinye noma ingxenye yehora, kushiywa ngaphandle ihora lokuqala, ngokwemfanelo elidingekayo ekucingweni nasekulungisweni okufana nalokhu. Angeke yeqe isamba sezindleko	ama-R100.00  ama-R300.00
10.	Idiphozi: Uma ukucinga kudlula amahora ayi-6	Okukodwa kwesithathu semali Ebalwa ngokwephuzulu lesi-2 nesi-8
11.	Imali yokuposa, i-imeyili nanoma yikuphi okunye ukudluliswa ngendlela ye-elekhtronikhi	Izindleko okuyizona zona, uma zikhona

### Indlela yokukhokha

I-NERSA izokwamukela izinkokhelo ngalezi zindlela ezilandelayo:

- Ukufaka imali ngqo ehangeni
- Ukuthrasfeya imali ngendlela ye-elekhtronikhi

### Imininingwane yasebhange

**Igama le-akhawunti:** National Energy Regulator of South Africa

**Igama lebhange:** Standard Bank

**Inombolo ye-akhawunti:** 011228547

**Ikhodi yegatsha:** 010845

**Uhlobo lwe-akhawunti:** Business Current Account

Umbhalo	Uhlobo	Inombolo Yefeksi	Isigaba Sokuphepha	UMnyango	Inombolo ye-Tanzwana	Usuku ekhishwe ngalo	Page 40 of 49
IMANUWALI YE-PAIA NE-POPIA	3	7/3/4/2/1	Ayibekwanga ngokwesigaba	I-IRM	NERSA-1532172523-68514	2022/23	



## ISHEDULI YESI-2

### IFOMU A

#### ISICELO SOKUFINYELELEKA KUREKHODI LOHLAKA LUKAHULUMENI

(ISahluko se-18(1) soMthetho Wokufinyeleleka Kolwazi wonyaka we-2000 [uMthetho wesi-2 wonyaka we-2000])

(ISimiso sesi-6)

#### LE NGXENYE ISETSHENZISWA NGUMNYANGO KUPHELA

Inombolo yereferensi:

Isicelo sitholwe ngu:

\_\_\_\_\_

(igama nesibongo soMgcinilwazi/sikaSekela-Mgcinilwazi) mhla zi-\_\_\_\_\_ (usuku) e-/o- \_\_\_\_\_ (indawo).

Imali yesicelo (uma ikhona): ama-R \_\_\_\_\_

Idiphozi (uma ikhona): ama-R \_\_\_\_\_

Imali yokufinyeleleka: ama-R \_\_\_\_\_

\_\_\_\_\_

Isignesha yoMgcinilwazi/kaSekela-Mgcinilwazi

#### **A Iminingwane yohlaka lukahulumeni** UMgcinilwazi/uSekela-Mgcinilwazi:

\_\_\_\_\_

\_\_\_\_\_

\_\_\_\_\_

\_\_\_\_\_

\_\_\_\_\_

\_\_\_\_\_

Umbhalo	Uhlobo	Inombolo Yefeksi	Isigaba Sokuphepha	UMnyango	Inombolo ye-Tanzwana	Usuku ekhishwe ngalo	Page 41 of 49
IMANUWALI YE-PAIA NE-POPIA	3	7/3/4/2/1	Ayibekwanga ngokwesigaba	I-IRM	NERSA-1532172523-68514	2022/23	

**B Imininingwane yomuntu ofaka isicelo sokufinyeleleka kwirekhodi**

- (a) *Imininingwane yomuntu ocela ukufinyeleleka kwirekhodi ifanele inikezwe ngezansi.*
- (b) *Ikheli futhi/noma inombolo yefeksi yaseRiphabhlikhi lapho kufanele ulwazi luthunyelwe khona lifanele linikezwe.*
- (c) *Ubufakazi bokuthi isicelo senziwa njengobani ngokwesikhundla, uma bukhona, bufanele bufakwe.*

Amagama aphelele nesibongo: \_\_\_\_\_

Inombolo Kamazisi/ye-ID:  
\_\_\_\_\_

Ikheli Leposi: \_\_\_\_\_

Inombolo Yefeksi: \_\_\_\_\_

Inombolo Yocingo: \_\_\_\_\_

Ikheli le-email: \_\_\_\_\_

Isikhundla sokuthi isicelo senziwa njengobani, lapho senzela omunye umuntu:

**C. Imininingwane yomuntu ofakelwa isicelo**

*Lesi sahluko sifanele sigcwaliswe KUPHELA uma umfakisisicelo efaka isicelo esifakela omunye umuntu.*

Amagama aphelele nesibongo: \_\_\_\_\_

Inombolo kamazisi/ye-ID: \_\_\_\_\_

Umbhalo	Uhlobo	Inombolo Yefeksi	Isigaba Sokuphepha	UMnyango	Inombolo ye-Tanzwana	Usuku ekhishwe ngalo	Page 42 of 49
IMANUWALI YE-PAIA NE-POPIA	3	7/3/4/2/1	Ayibekwanga ngokwesigaba	I-IRM	NERSA-1532172523-68514	2022/23	

**D. Imininingwane yerekhodi**

- (a) Hlinzeka ngemininingwane ephelele yerekhodi okucelwa ukufinyeleleka kulo, kubandakanya inombolo yereferensi uma uyazi, ukwenzela ukuthi litholakale irekhodi.
- (b) Uma isikhala osinikiwe sisincane, sicela uqhubekele kwelinye ikhasi elehlukile bese ulinamathisela kuleli fomu.

**Umfakisicelo ufanele asayinde onke amaphepha angeziwe.**

1 Ukuchazwa kwerekhodi noma izingxenye ezifanele zerekhodi:

\_\_\_\_\_

2 Inombolo yereferensi, uma ikhona: \_\_\_\_\_

3 Nanoma ngabe imiphi eminye imininingwane yerekhodi:

\_\_\_\_\_

**E. Izimali ezikhokhwayo**

- (a) Isicelo sokufinyeleleka kwirekhodi ngaphandle kwerekhodi eliphethe ulwazi lobuqu ngawe, luzosetshenzwa kuphela ngemuva kokuba imali yesicelo isikhokhiwe.
- (b) Uzokwaziswa ngesamba semali edingeka ukuba ikhokhwe njengemali ekhokhwayo yesicelo.
- (c) Imali ekhokhwayo yokufinyeleleka kwirekhodi ilele ohlotsheni ukufinyeleleka okudingeka ngalo futhi nasesikhathini esidingekayo ukucinga nokulungisa irekhodi.
- (d) Uma ufaneleka ukuba udedelwa ukuba ukhokhe nanoma ngabe iyiphi imali ekhokhwayo, sicela usho isizathu sokudedelwa.

Isizathu sokudedelwa ukuba ukhokhe izimali:

\_\_\_\_\_

\_\_\_\_\_

\_\_\_\_\_

**F. Uhlobo lokufinyeleleka kwirekhodi**

*Uma uvinjwe ukukhubazeka ukuba ufunde, ubuke noma ulalele irekhodi ngohlobo ukufinyeleleka okuhlinzekwe ngalo ku-1 ukuya ku-4 ngezansi, shono ukukhubazeka kwakho futhi usho uhlobo irekhodi elidingeka ngalo.*

Umbhalo	Uhlobo	Inombolo Yefeksi	Isigaba Sokuphepha	UMnyango	Inombolo ye-Tanzwana	Usuku ekhishwe ngalo	Page 43 of 49
IMANUWALI YE-PAIA NE-POPIA	3	7/3/4/2/1	Ayibekwanga ngokwesigaba	I-IRM	NERSA-1532172523-68514	2022/23	

Ukukhubazeka:		Uhlobo irekhodi elidingeka ngalo:	
Faka uphawu u-X ebhokisini elifanele.			
AMANOITHI:			
(a) Ukuhlonipha imithetho ehambisana nesicelo sakho sokufinyeleleka ngohlobo oluphawuliwe kungalala ohlotsheni irekhodi elitholakala ngalo.			
(b) Ukufinyeleleka ngohlobo oluceliwe kungenqatshwa ezimweni ezithile. Kulezi zimo uzokwaziswa uma ukufinyeleleka kuzotholakala ngolunye uhlobo.			
(c) Imali ekhokhwayo yokufinyeleleka kwirekhodi, uma ikhona, izonqunywa kancane uhlobo lokufinyeleleka oluceliwe.			
1. Uma irekhodi linguhlobo olubhaliwe noma oluphrintiwe:			
	ikhopi yerekhodi*		ukuhlolwa kwerekhodi
2. Uma irekhodi lakhiwe yizinto ezibukwayo: (Lokhu kubandakanya izithombe, amaslayidi, okurekhodiwe kwevideo, imifanekiso eyakhiwe ngekhopyutha, imidwebo, njll.):			
	ukubuka izithombe	Ikhopi yezithombe*	okubhaliwe ngemifanekiso*
3. Uma irekhodi lenziwe ngamagama arekhodiwe noma ngolwazi olungakhiqizwa futhi ngomsindo:			
	ukulalela umsindo oqoshiwe (ikhasethi lomsindo)		Umbhalo womsindo oqoshiwe* (umbhalo obhaliwe noma ophrintiwe)
4. Uma irekhodi ligcinwe kwikhompyutha noma ngohlobo olufundeka ngomshini:			
	ikhopi ephrintiwe yerekhodi	ikhopi ephrintiwe yolwazi olususelwa kwirekhodi*	ikhopi yohlobo olufundekayo ngohlobo olufundeka ngomshini* (Isitifi diskhi noma ikhompekthi diskhi)

Umbhalo	Uhlobo	Inombolo Yefeksi	Isigaba Sokuphepha	UMnyango	Inombolo ye-Tanzwana	Usuku ekhishwe ngalo	Page 44 of 49
IMANUWALI YE-PAIA NE-POPIA	3	7/3/4/2/1	Ayibekwanga ngokwesigaba	I-IRM	NERSA-1532172523-68514	2022/23	

*Uma ucele ikhopi noma umbhalo werekhodi (elingenhla), ingabe uthanda ukuba ikhopi noma umbhalo werekhodi uposelwe kuwe? <b>Imali yokuposa iyakhokhwa.</b>	YEBO	CHA
Qaphela ukuthi uma irekhodi lingatholakali ngolimi oluthandayo, ukufinyeleleka kungatholakala ngolimi irekhodi elitholakala ngalo.		
Yiluphi ulimi ongathanda ukuthola ngalo irekhodi?		

**G. Isaziso ngesinqumo mayelana nesicelo sokufinyeleleka**

Uzokwaziswa ukuthi isicelo sakho sivunyiwe/senqatshiwe. Uma ufisa ukwaziswa ngenye indlela, sicela uyisho leyo ndlela futhi uhlinzeke ngemininingwane evumela ukuba kuhlonishwe isicelo sakho.

Ungathanda ukwaziswa kanjani ngesinqumo mayelana nesicelo sakho sokufinyeleleka kwirekhodi?

---



---

Isayindwe e-/o- \_\_\_\_\_ ngalolu suku lomhla zi-  
\_\_\_\_\_ luka- \_\_\_\_\_ 20\_\_\_\_\_.

---

ISIGINESHA YOMFAKISICELO/YOMUNTU OFAKELWA ISICELO

Umbhalo	Uhlobo	Inombolo Yefeksi	Isigaba Sokuphepha	UMnyango	Inombolo ye-Tanzwana	Usuku ekhishwe ngalo	Page 45 of 49
IMANUWALI YE-PAIA NE-POPIA	3	7/3/4/2/1	Ayibekwanga ngokwesigaba	I-IRM	NERSA-1532172523-68514	2022/23	

## ISHEDULI YESI-3

### IFOMU B

#### ISAZISO NGESIKHALAZO SANGAPHAKATHI

(ISahluko sama-75 soMthetho Wokufinyeleleka Kolwazi wonyaka we-2000 [uMthetho wesi-2 wonyaka we-2000])

**(ISimiso sesi-8)**

**INOMBOLO YEREFERENSI:** \_\_\_\_\_

**A. Imininingwane yohlaka lukahulumeni**

UMgcinilwazi/uSekela-Mgcinilwazi:

---

---

---

---

**B. Imininingwane yomfakisicelo/yengxenye yesithathu efaka isikhalazo sangaphakathi**

*(a) Imininingwane yomuntu ofaka isikhalazo sangaphakathi ifanele inikezwe ngezansi.*

---

---

---

---

*(b) Ubufakazi bokuthi sifakwa njengobani isikhalazo ngokwesikhundla, uma bukhona, bufanele bufakwe.*

Umbhalo	Uhlobo	Inombolo Yefeksi	Isigaba Sokuphepha	UMnyango	Inombolo ye-Tanzwana	Usuku ekhishwe ngalo	Page 46 of 49
IMANUWALI YE-PAIA NE-POPIA	3	7/3/4/2/1	Ayibekwanga ngokwesigaba	I-IRM	NERSA-1532172523-68514	2022/23	

- (c) *Imininingwane yomfakisicelo, futhi hhayi umuntu okunguyena ofake isicelo sokufinyeleleka kwirekhodi, imininingwane yomfakisicelo ifanele inikezwe ngezansi. Amagama aphelele*

---

*Inombolo kamazisi/ye-ID.*

---

*Ikheli leposi*

---

*Inombolo yefeksi*

---

*Inombolo yocingo*

---

*Ikheli le-imeyil*

---

*Isikhundla sokuthi isikhalazo sangaphakathi senziwa njengobani senziwela omunye umuntu: \_\_\_\_\_*

- C. Imininingwane yoMfakisicelo** (gcwalisa le ngxenye KUPHELA uma ufaka isicelo njengengxenye yesithathu, okungukuthi usifaka egameni loMfakisicelo)

Amagama aphelele

---

Inombolo kamazisi/ye-ID:

---

- D. Isinqumo isikhalazo sangaphakathi esifakelwa ukusiphikisa**

	<i>Faka umaka u-X ebhokisini elifanele lesinqumo isikhalazo sangaphakathi esifakelwa ukusiphikisa</i>
	<i>Ukunqaba isicelo sokufinyeleleka</i>
	<i>Isinqumo mayelana nezimali ezibekwe ngokwesahluko sama-22 soMthetho</i>

Umbhalo	Uhlobo	Inombolo Yefeksi	Isigaba Sokuphepha	UMnyango	Inombolo ye-Tanzwana	Usuku ekhishwe ngalo	Page 47 of 49
IMANUWALI YE-PAIA NE-POPIA	3	7/3/4/2/1	Ayibekwanga ngokwesigaba	I-IRM	NERSA-1532172523-68514	2022/23	

	<i>Isinqumo mayelana nokwelulwa kwesikhathi isicelo okufanele sisetshenzwe ngaso ngokwesahluko sama-26 (1)</i>
	<i>Isinqumo ngokwesahluko sama-29 (3) soMthetho sokunqaba ukufinyeleleka ngohlobo olucelwe nguMfakisicelo</i>
	<i>Isinqumo sokuvuma isicelo sokufinyeleleka</i>

**E. Izizathu zokukhalaza**

---



---



---



---



---



---



---

**F. Isaziso ngesinqumo ngesikhalazo**

*Uzokwaziswa ngokubhalwe phansi ngesinqumo sokukhalaza kwakho kwangaphakathi. Uma ufisa ukwaziswa ngenye indlela, sicela uyisho leyo ndlela futhi uhlinzeke ngemininingwane evumela ukuba kuhlonishwe isicelo sakho.*

Shono indlela \_\_\_\_\_

Imininingwane yendlela

---



---

Isayindwe e-/o- \_\_\_\_\_ ngalolu suku lomhla zi-  
 \_\_\_\_\_ luka- \_\_\_\_\_ 20 \_\_\_\_\_

Isiginesha Yomfakisikhalazo \_\_\_\_\_

Umbhalo	Uhlobo	Inombolo Yefeksi	Isigaba Sokuphepha	UMnyango	Inombolo ye-Tanzwana	Usuku ekhishwe ngalo	Page 48 of 49
IMANUWALI YE-PAIA NE-POPIA	3	7/3/4/2/1	Ayibekwanga ngokwesigaba	I-IRM	NERSA-1532172523-68514	2022/23	



**LE NGXENYE ISETSHENZISWA NGAPHAKATHI EHHOVISI KUPHELA**

**UKUREKHODWA NGOKUSEMTHETHWENI KOKUKHALAZA KWANGAPHAKATHI**

INOMBOLO YEREFERENSI: \_\_\_\_\_

Igama loMgcinilwazi/likSekela-Mgcinilwazi: \_\_\_\_\_

Isikhalazo satholwa mhla zi:- \_\_\_\_\_ ngu- \_\_\_\_\_

Isizathu Sokukhalaza sishiwo: Yebo \_\_\_\_ Cha \_\_\_\_ (faka uphawu)

**UMPHUMELA WOKUKHALAZA**

Isinqumo soMlawuli Wezamandla:

---

---

---

---

Usuku isinqumo esathathwa ngaso:

---

---

---

---

Usuku: \_\_\_\_\_

Isignesha: \_\_\_\_\_

Umbhalo	Uhlobo	Inombolo Yefeksi	Isigaba Sokuphepha	UMnyango	Inombolo ye-Tanzwana	Usuku ekhishwe ngalo	Page 49 of 49
IMANUWALI YE-PAIA NE-POPIA	3	7/3/4/2/1	Ayibekwanga ngokwesigaba	I-IRM	NERSA-1532172523-68514	2022/23	